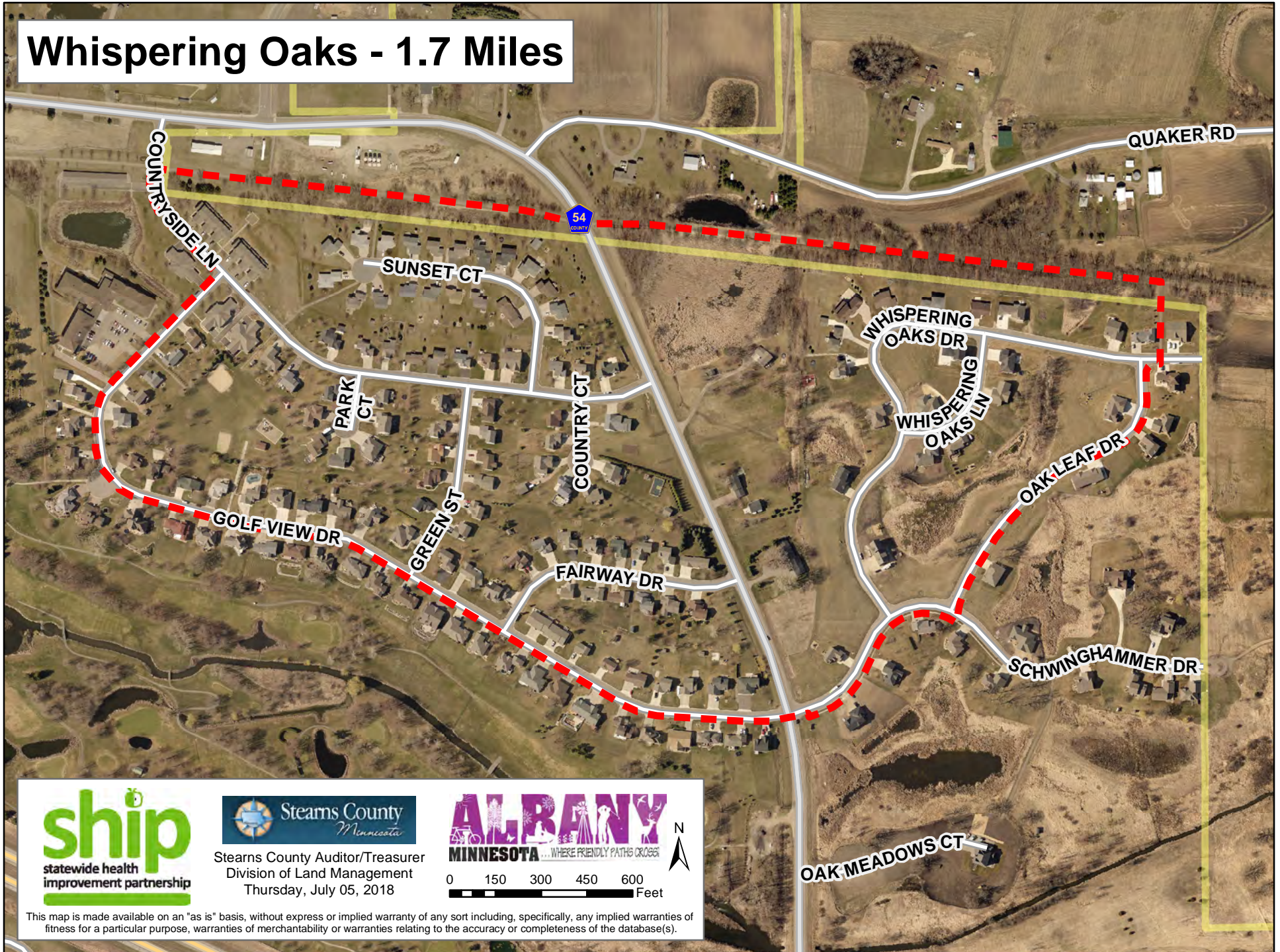


Whispering Oaks - 1.7 Miles



Stearns County Auditor/Treasurer
Division of Land Management
Thursday, July 05, 2018



0 150 300 450 600 Feet



This map is made available on an "as is" basis, without express or implied warranty of any sort including, specifically, any implied warranties of fitness for a particular purpose, warranties of merchantability or warranties relating to the accuracy or completeness of the database(s).