

**NOTICE OF ALBANY
CITY COUNCIL WORK SESSION**

The City of Albany, City Council will hold a work session at 4:30 o'clock in the evening on Wednesday, September 4, 2024, in the council room at 400 Railroad Avenue for the said City.

AGENDA

1. Gary Winkels, Clerk/Adm, Review operation of work session.
2. 2024 City-wide survey results.
3. 2025 proposed budget.
4. North Park improvements.
5. Adjourn

Gary Winkels
Administrator/Clerk

Please provide your name (your information will be kept confidential, but we want to be able to verify residency in Albany).

Answered: 439 Skipped: 0

ANSWER CHOICES

RESPONSES

Name

100.00%

439

City of Albany 2024 All-City Survey

Please provide us with your City of Albany property address (your information will be kept confidential, but we want to be able to verify residency in Albany).

Answered: 439 Skipped: 0

ANSWER CHOICES

RESPONSES

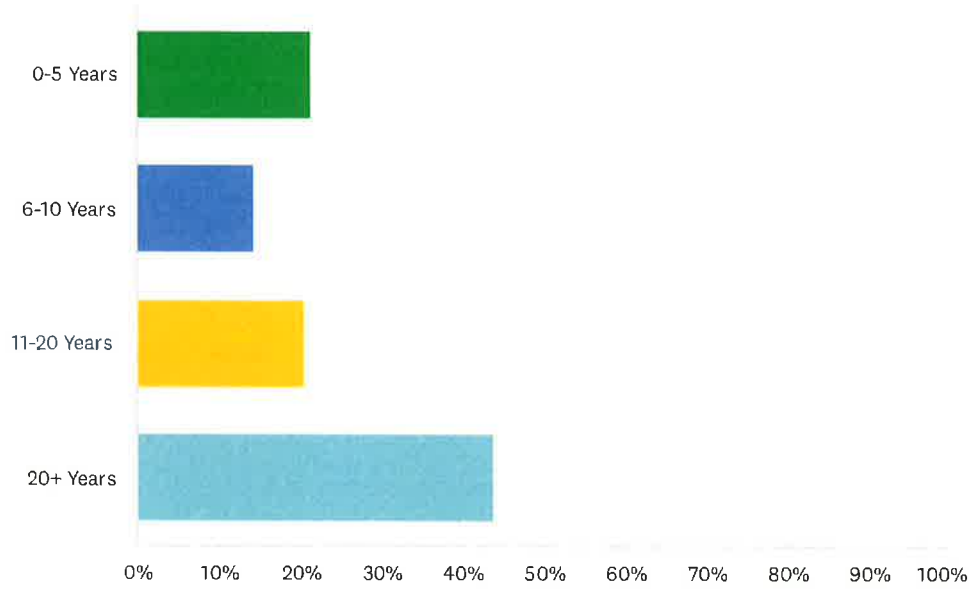
Street address

100.00%

439

How long have you lived in the City of Albany?

Answered: 438 Skipped: 1



ANSWER CHOICES

0-5 Years

6-10 Years

11-20 Years

20+ Years

TOTAL

RESPONSES

21.23%

14.38%

20.55%

43.84%

93

63

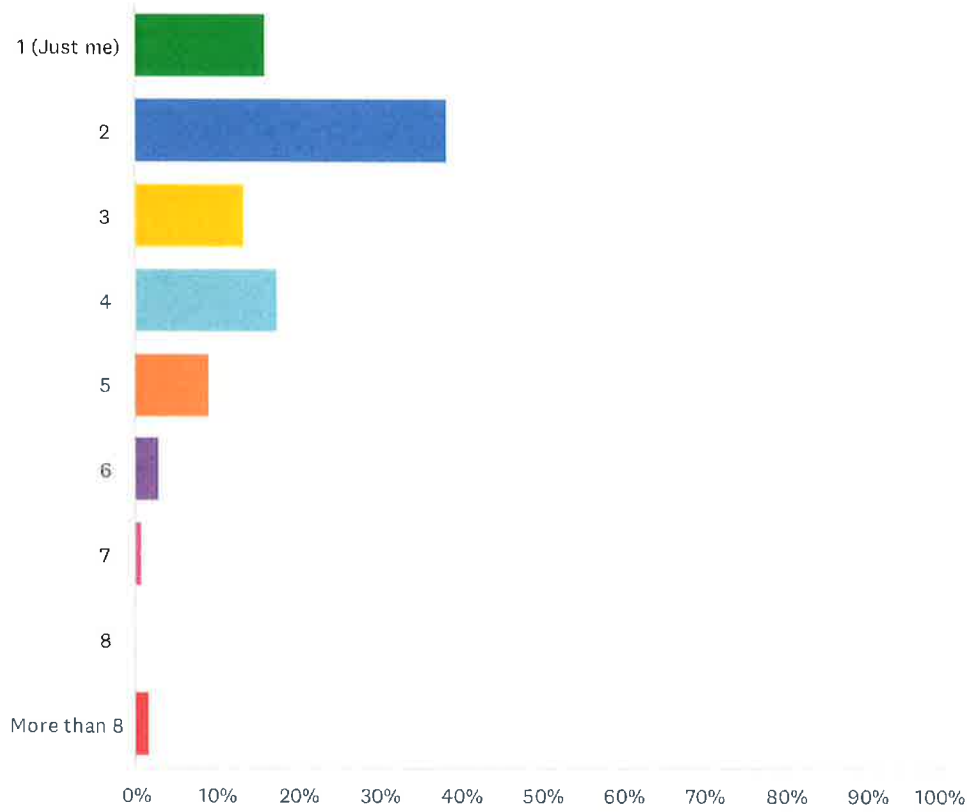
90

192

438

How many people currently reside in your household?

Answered: 433 Skipped: 6



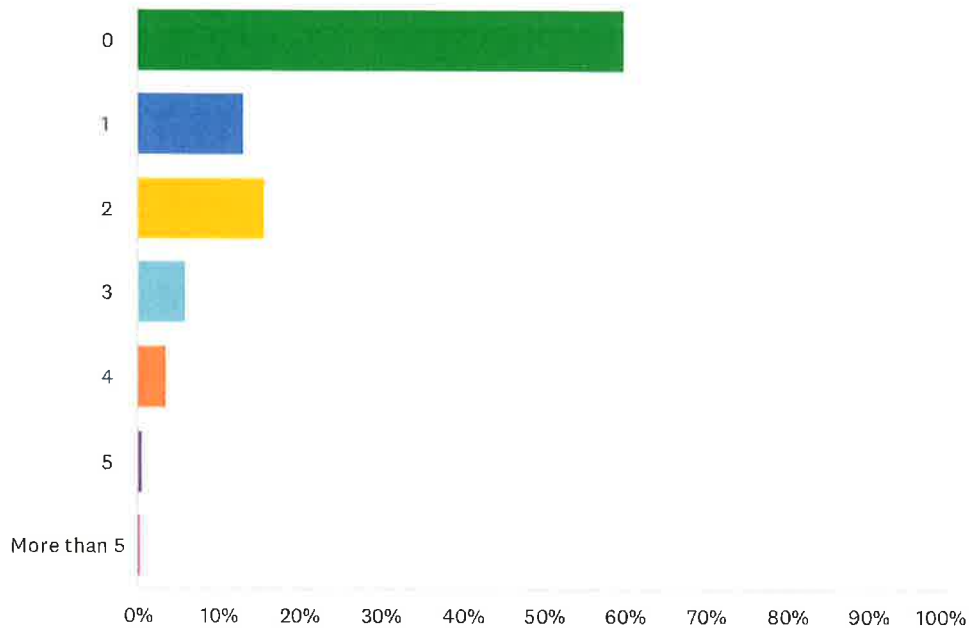
ANSWER CHOICES

RESPONSES

1 (Just me)	15.94%	69
2	38.34%	166
3	13.39%	58
4	17.55%	76
5	9.24%	40
6	3.00%	13
7	0.92%	4
8	0.00%	0
More than 8	1.62%	7
TOTAL		433

How many children currently reside in your household (ages 16 and younger)?

Answered: 431 Skipped: 8



ANSWER CHOICES

0
1
2
3
4
5
More than 5

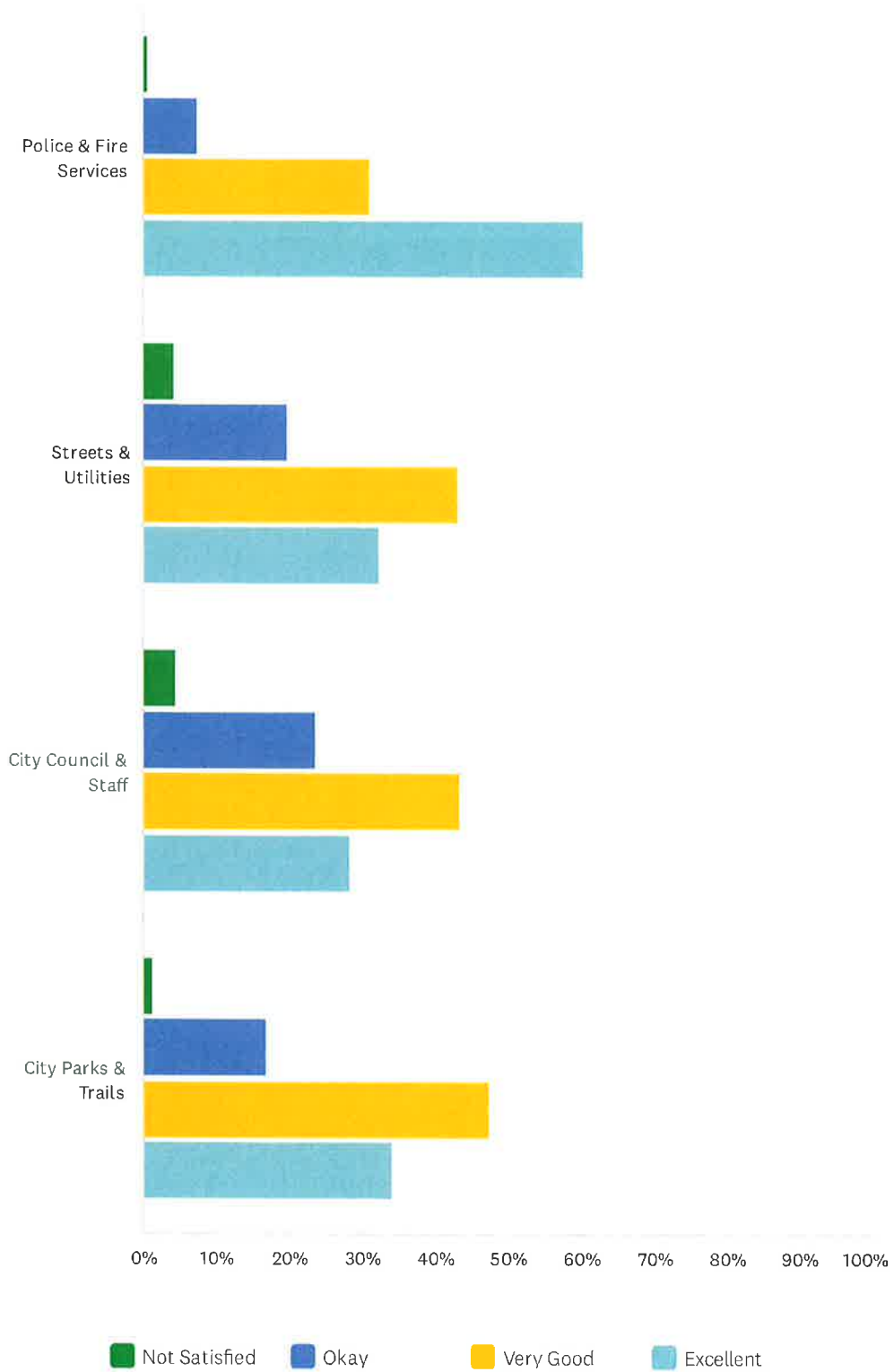
RESPONSES

60.09% 259
13.23% 57
15.78% 68
6.03% 26
3.71% 16
0.70% 3
0.46% 2

TOTAL

431

City of Albany 2024 All-City Survey

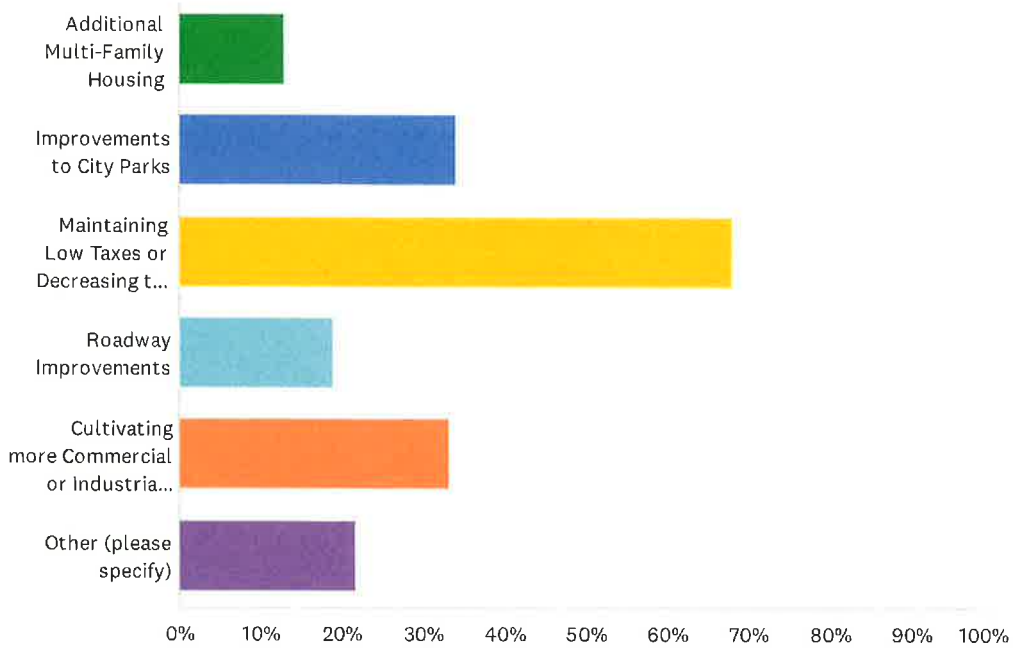


City of Albany 2024 All-City Survey

	NOT SATISFIED	OKAY	VERY GOOD	EXCELLENT	TOTAL
Police & Fire Services	0.69% 3	7.57% 33	31.19% 136	60.55% 264	436
Streets & Utilities	4.35% 19	19.91% 87	43.25% 189	32.49% 142	437
City Council & Staff	4.42% 19	23.72% 102	43.49% 187	28.37% 122	430
City Parks & Trails	1.37% 6	16.93% 74	47.60% 208	34.10% 149	437

Which of the following areas of focus might best benefit the City of Albany over the next 5 years? Please select two options.

Answered: 434 Skipped: 5



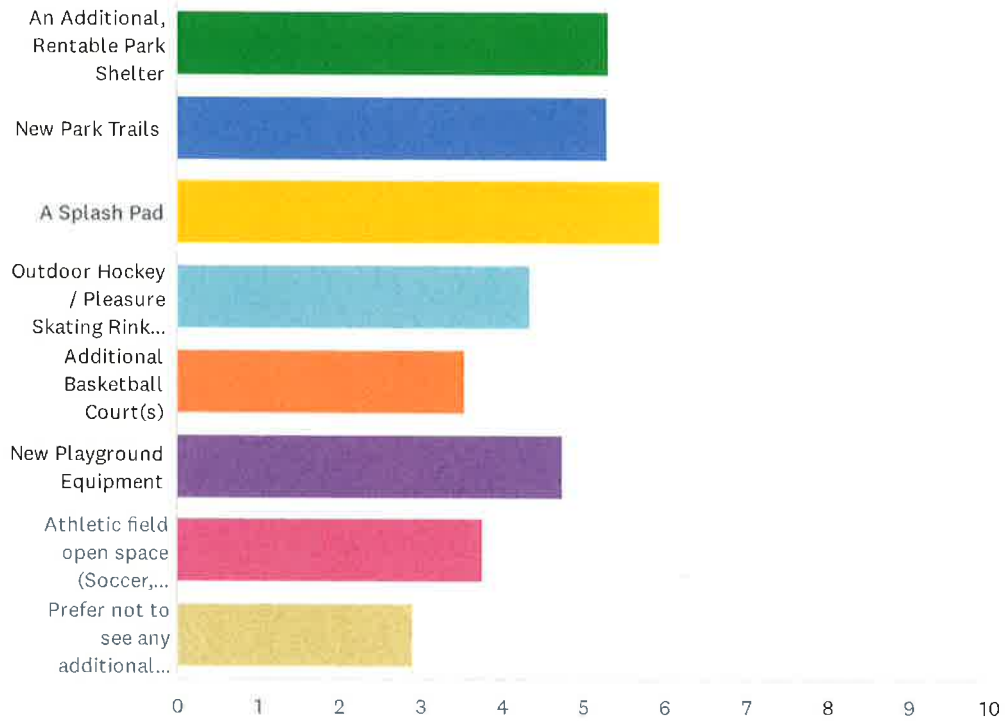
ANSWER CHOICES

RESPONSES

Additional Multi-Family Housing	12.90%	56
Improvements to City Parks	34.10%	148
Maintaining Low Taxes or Decreasing the Tax Levy	68.20%	296
Roadway Improvements	18.89%	82
Cultivating more Commercial or Industrial Business	33.18%	144
Other (please specify)	21.66%	94
Total Respondents: 434		

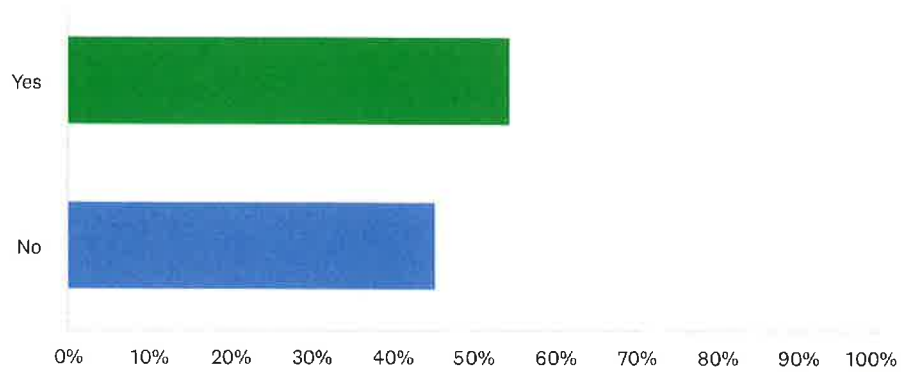
Please rank the following park improvements that you would like to see added in the City, if funding is available.

Answered: 398 Skipped: 41



If needed, do you support City funding of the projects you prioritized above? City funding may increase property taxes.

Answered: 428 Skipped: 11



ANSWER CHOICES

Yes

No

TOTAL

RESPONSES

54.67%

45.33%

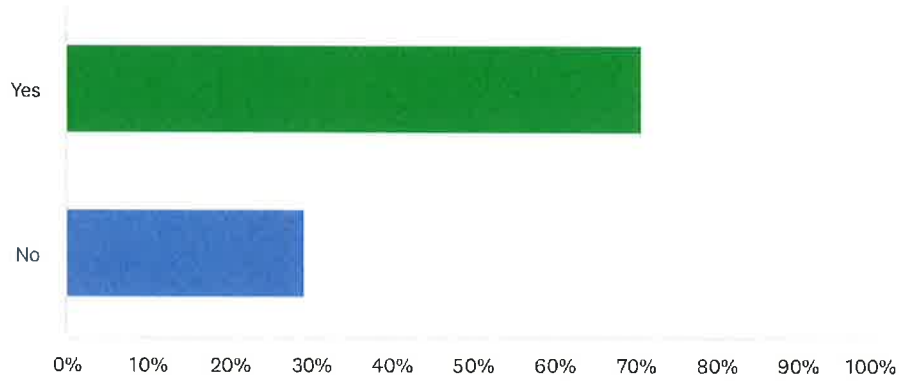
234

194

428

If a Splash Pad was to be built using outside funding, and maintenance of the facility is fully or partially funded for 5 years, would you be in support of this project at North Park?

Answered: 422 Skipped: 17



ANSWER CHOICES

Yes

No

TOTAL

RESPONSES

70.85%

29.15%

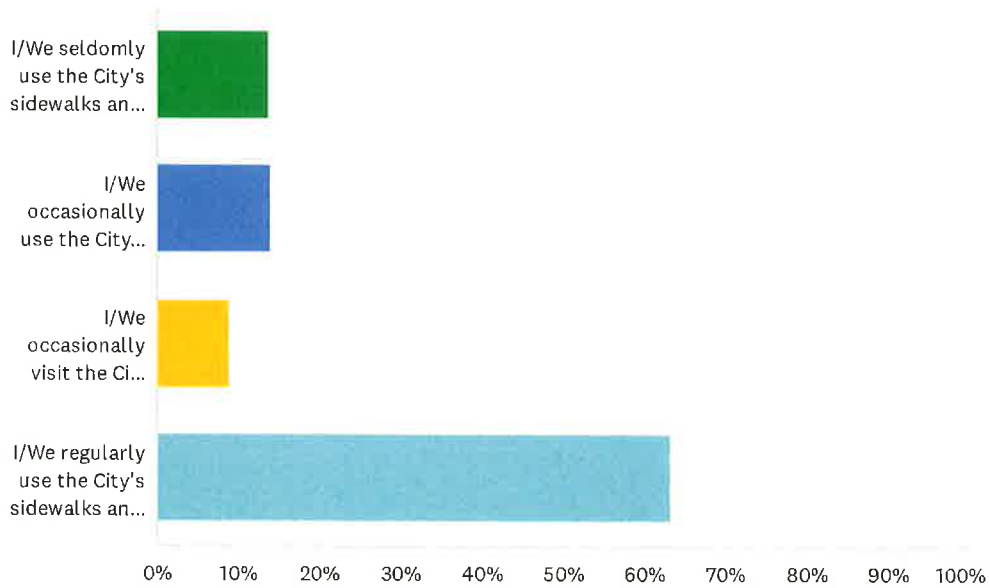
299

123

422

Which statement below best characterizes your use of City parks, trails and sidewalks?

Answered: 429 Skipped: 10



ANSWER CHOICES

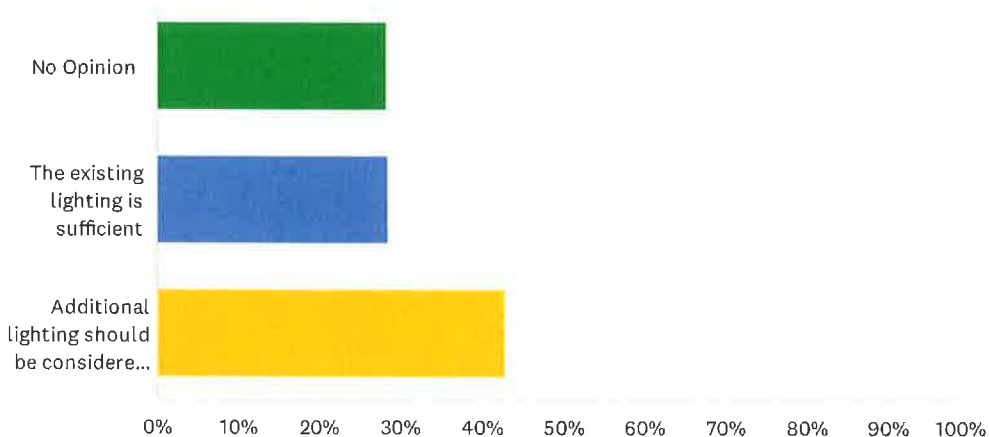
- I/We seldomly use the City's sidewalks and trails, and we don't currently visit the City parks
- I/We occasionally use the City's sidewalks and trails, but don't visit the City parks
- I/We occasionally visit the City Parks, but don't use the City's sidewalks and trails
- I/We regularly use the City's sidewalks and trails, and have visited City parks multiple times
- TOTAL

RESPONSES

13.75%	59
13.99%	60
8.86%	38
63.40%	272
	429

How would you rate the lighting of the existing City sidewalks and trails?

Answered: 433 Skipped: 6



ANSWER CHOICES

RESPONSES

No Opinion	28.41%	123
The existing lighting is sufficient	28.64%	124
Additional lighting should be considered for new sidewalks and trails	42.96%	186
TOTAL		433

In your opinion, what is the best thing about living in Albany?

Safety

Albany has everything you would need!

Small town and central location

Best town in the world!

Quiet, peaceful town

Better than an apartment

Safety and small town feel

It's a small town

Family and trails for walking

Quiet and safe

Citizens of Albany, responsible City Officials and employees

Small town is what I like best with everything I need, gas, grocery, churches.

Good Neighbors

School, clinic, stores uptown, church, parks

Small - town community!

It is a clean, safe community

Peaceful

The quaintness of our community, keeping things simple

The Wobegon Trail

Location

Small town feeling and sense of community.

Small town feel, family friendly

Clean, quiet, good schools

Only here 1 month

Small town

Small town community

Have medical, grocery store, church, and school

Close to I-94

Small, little to no crime!

Location

It always was you knew everyone, now people don't ever say "hello"

Small town community feel.

Doctor and pharmacy

For a small town, have most things we need without going to a bigger town. Friendly people.

Helpful people!

Small town

Living in a small town

Family friendly neighborhood

Quiet community

Golf course, schools, many business/entertainment.

Small Community

Friendly town, good services, good school

Low taxes

School, peaceful

I have very nice neighbors!

The sense of community - People help each other

small town community

Safe, progressive, clean

Small town atmosphere

Being in a small town in a rural area for our retirement.

Small town feel

The people

Interstate food options

Nice town

Town has all services I use - Church, store, pharmacy, clinic, and more

small town atmosphere

Small town kindness

I like the neighborliness

Good schools, streets and businesses maintained well

Convenience of everyday living needs

It's clean

The small town feel and the schools

Grocery store in town

Great school, friendly environment.

I love this town! Everybody is friendly, it has everything anybody needs.

Small town

The safety of the community

Schools and parks

Small Town

Small town

Good School District

Low taxes/size

School system

Convenience

School, friendly atmosphere

Not a thing

Sense of community

Quiet, clean & friendly

Small town, with small town values

Convenience (gas stations, hardware, body shop)

Safe, clean community - Nice main street, good employees, good streets, dog park, nice golf course & club house, & good schools.

Indoor walking, bike trail, parks, BEAT shows.

Close to family and friends - friendly town

Smaller school district

The golf course

Convenient

The community businesses - Albany has so many options

Things/activities for kids, give them things to do or they will find things to do. So much use of the pickleball courts, great to see!!!

School District

Great people
Small town friendly
Small town atmosphere
We live away from the large towns.
Great family friendly community and City Council members who are concerned about what the people living in the City of Albany think about certain projects and how we feel about our taxes being affected by them.
Small town, quiet
The friendly people
Small town feel
Small town close to lots of places I go
The people
Small town
All the friends
Friendliness, small town living
Hopefully very welcoming. Nice place to raise a family. Great school system
Stores are close by
Convenient - easy access to I-94 travel, school, minimal low-income housing.
Friendly atmosphere
Safe/small town living
Neighbors
Small town
Grocery store, gas stations, church, doctors
Quiet neighborhood
Safe city, small town feel
A place to retire
It is a nice town and easy to get around to all the businesses
Small town
Small town and have schools and medical clinic
Low crime, no roundabouts
Medical and dental close by
Small community
Small town
Peaceful community - easy to access to I-94
Small town friendliness
Easy access to the walking/biking trail
Small town, knowing a lot of residents.
Small town feeling
Small town community
The people are very friendly
Donations from Chrysler to improve the town
quiet - low key town to live in. Get super small town vibes in small city living - moved from country
Small town feel
Snow removal, north park, downtown, library
Access to gas stations
Small town - rural feel - low crime rate
Small town feel
Small town/community

Safe/Quiet/Small town vibes
Small town feel
Small town atmosphere - people knowing their neighbors.
The "hometown feel"
Small town atmosphere
Small town feel
It's a small town
Small community
The activities in the community, the school
Small town
Available amenities (Retail), etc. Low taxes
Community
Quietness & Trails
The school system
Quiet - close to my daughter & grandkids
Small town where lots of free activities to do - i.e. Wobegon Trail, pickleball, etc.
Most of it just feels all like family
The small town feeling
Conservative Values
Small, offers great school, medical, basic needs
Community
Small town & safe
Small town atmosphere
Proximity to friends and family! Great schools, and good balance of faith/fun/employment, etc.
Small quiet town
Community and schools
Small, safe, and secure town along I-94
City does great to maintain & run city & people are good about maintaining property.
Close to 94, dog park, and having stores and gas stations close.
Small city - good city services
Small town feel
Community feel, strong school, central part of the state
Easy access to interstate; close to work
The school
Schools
How clean everything is plus the constant improvement of streets, sewer pipes, and water pipes.
Having local business/nonprofits that care about improving the community.
Trails
Small town values and feel
Family, friendly neighbors/people
Conservative values
Small town and people willing to help and serve others.
Good neighbors, walkability
Small town, low crime
Neighbors
Easy access to trails
Location to the highway, it has a little of everything. Enjoy the Albany Facebook Friends site!

Small town, great schools.
Small town/less crime
Low crime
Easy city living - having grocery store, restaurants, trail close by.
Everyone is so friendly!
Small town feel
Location and small town living
The community is close with each other.
It's a rural community and you get to know many others
Small town friendliness
It's home
People and businesses
Quiet, small town
It is a safe town. Our police and fire department are the best!
No answer
Friendly people, great sense of community.
Small community - not much violence yet
Small town, safe, and friendly
It's a nice town
Small town with a lot to offer
Community
Small town feel
Quality of life - small town feel
No answer
Small town atmosphere
School district
Wobegon Trail
Nice, clean, and safe city
I grew up here, it's home
Public safety, friendly/social police force
Great neighbors
Small town feel and people helping each other when needed is great!
Nice friendly people
No answer
Location
Good people, clean, lots of good businesses to use
Small town living
Safety
Community
Small town feel
Location
Well maintained
Living close to my kids and grandkids
Safe and friendly community and good school
We have medical care and our Church
Quiet small town with nice park, trails, and golf course. Large town nearby.
PROXIMITY TO OUR JOBS

NOTHING ANYMORE. IT USED TO BE A SMALL, "QUIET" TOWN, BUT TOO MANY TREES HAVE BEEN CUT DOWN AND NOT REPLACED, WHICH HELPED CLEAN THE AIR AND PROVIDE SOUND ABSORPTION FROM NOISY I-94 AND HWY 238. NOW WE LIVE IN A MAJOR ECHO CHAMBER.

SMALL TOWN FEEL

The school district, people, there isn't much bad about the town except the brown water that comes out of the faucets every morning in the highlands.

The trail

Small town atmosphere, school spirit and great schools.

Safe community

GOOD SCHOOLS, LOW-CRIME, COMMUNITY, GOOD PEOPLE

Size

Small town feel but close to larger towns.

The pride is very high in Albany. Also, people here take care of their property & neighbors too.

Small town living.

School district and small town

Small town

The small town atmosphere, friendly people.

Small town living, parks, and wobegon trail.

The community

Small town values, schools, the people

Small town, good people

Albany is a super family oriented town!

The small town community

Beautiful clean city with amenities

Good school.

That we are close to the school so getting kids to activities is not a pain.

The community

To get the slash pad.

Small town

Having numerous resources for my small children and still having the small town feel

Safe, quiet, small town.

The community

Community, schools, neighbors

It's quiet

The schools

Family

Safe and quiet environment

Tight community

I grew up in farming and graduated from Albany High, the best thing about Albany is the small town kindness to

The people

The biking/ walking trail!

Small town

The convenient location to everything

Love the small town and family is here

The school district

The people

The community

The community, filled with friendly, kind people. The city is well cared for and very safe, & great businesses in City services, town is well taken care of. Police, Fire Department, and city employees care about the town. It is a small, overall safe place to live

The close community

Albany is a very tight knit community, everybody seems to take care of business and help out when needed. It's a great community for young families, I grew up in Albany the reasons above are ultimately what kept me here!

Small town living but have almost everything we need right in town

School district

Small town, big community, close to other bigger towns

Kind people

It's a small town

Clean, safe town

Small town nice

Small community, good people. Active community people who are trying to make the community better.

People

The school district

Quiet town, great park, school district

Small town feel. Neighbors will do almost anything for each other. Love the importance of small businesses. And the amazing teachers at Albany Area Schools.

The community

Keeping the city clean

The community support

Small town living, but still have the convenience of all the businesses in town

Great small town community, growth, community support for school and purple pride.

Great small town

Small town

The small town

The great people and the amenities that the city provides for us

The water! Love that it has so many chemicals in it that it smells like pool in the house. Or that the tap can take out wine stains with no stain treatment.

Small Town feel and safe

The schools and the golf course.

Small Town living

How close I am to work.

No stoplights

Small town atmosphere

The small family vibe.

The community

Strong community support, small town feel but still have most resources local, school district

The smaller size of the community and wonderful neighborhood and safe!

Good school district. Safe, quiet, friendly community.

Small town

School district, ease of getting places with 94, community, variety of business / services in town.

Safe and cozy

Low crime, Family, strong business community, solid school district

So much! We love this town and district. School system is great, people are wonderful, location relative to big and small cities, it's kept clean and safe, lots of small businesses and they are growing.

Great school district. Safe community.

Close to freeway and hospitals

Good community. Plenty of activities like the Wobegon Trail, Pickleball, dog park, and pioneer days

The strong community bond. Most people in this town look out for each other and most of the time willing to

The community and the beautiful town.

Community

Community support

The friendly community

The Golf Course

It feels safe and clean.

Small town feel, most people watch out for each other

Nice variety of amenities while maintaining small town feel

Great neighbors and schools.

Central location. The businesses available

Small town feeling, central to other cities

Friendly, great place to raise children

It's a safe community with a great school district

Our neighbors/neighborhood is amazing. We all get along and regularly hang out together. The town is a nice small town and I am proud to say I live here. The school is really great as well.

The long time friends and family that live here

Community support, new businesses, park system, school.

Safe community

How safe it is.

Small town feel

The safety and community

Grocery store and convince / gas stations. A church and walking/ bike trails

Small town near larger towns

Easy access to and walking distance to everything

Love the school

The small town feel of it

Friendly people

I love how small Albany is.

The community

Great school system

Affordable

Low rental prices

School

close to St Cloud or Mpls area

The people. Small town feel close to a bigger city.

Safety

The streets are clean and local law enforcement is very visible

Our neighbors

Small town community. People looking out for their community and the people in that community

It's a great small town that seems to look after each other with great friendly neighbors.

School district

Safety and people

Small town feel

Small town feel. Adequate grocery store.
Low crime, safe place for kids, clean, upkeep is nice (flower boxes, street cleaner, street flags)
Small town feel
Small town feel
Small town feeling
A good area to reside in with all the amenities needed to take care of most situations...
Small friendly community
Albany offers many businesses and leisure activities for a town its size.
The community. We love how the town is constantly changing and improving itself to make it a place people
Has a little bit of everything
How easy the town is to navigate and find things. Ever building on its own stands out beautifully, but still holds
that history look. Just beautiful.
Small town, safe, good schools.
Things the community has to offer like the newly updated north park
Small town, friendly and safe feel.
It's safe!
Small town, friendly people
Size of town and the conveniences it has- grocery store, drug store, gas station, restaurants, bike trails, etc. Plus
The community pride and involvement.
Close to family and friends
The schools and park have had such a positive impact on my children
Friendly people
Community. There is a great feeling of Community and connectedness
Access to interstate School district
We feel safe in our community.
The cleanliness of most of town and the appearance.
Low crime, friendliness.
The school and community
The people and school
Small town feel, but there are (options/some amenities)
Strong , supportive community. Great school system and lots of things to do.

What is one thing you would change about Albany, if you could?

Kraft on Main Street
Nothing at the present time
Put a speed limit sign up at shamrock lane & street light
Taxes
Use less salt
More restaurants, Dollar Tree
Taxes - fire ordinance (burning)
Gravel road behind my house
Require multiple public hearings before projects are undertaken.

Lower water table
Reduce real estate taxes.
More main street businesses
Fix pot holes. Weed lawns on neighbors and empty lots and walking trail maintained better. Better water
Water treatment/Junk in peoples yards
Nothing - we love it here.
More community events - craft fairs?
Lower taxes
More food/restaurant options that are healthier
More elderly housing
More family restaurants
More kids activities
Move the siren to a better area.
Have a drive-up mailbox at Post Office like Melrose and Richmond.
More restaurants
More kid friendly things to do.
Clean water
Joel Schneider business parking, traffic light at holiday gas station for large amount of incoming traffic
Taxes are too high!
Better water quality
It's a small town and people should be more friendly
Add ambulance
Kwik Trip or Dollar General
Need a good restaurant
Would like to see a nice restaurant in town
Not cutting so many trees down for sidewalks
volleyball net at a park
Some sort of traffic control (lights) by holiday store
Intersection of 238 and Co. Rd. 54
Keeping businesses locally owned.
Need independent houses. Dollar Store - I can't afford the big box stores. More things for kids. Grocery
Lower property taxes!
More trail stores and restaurants. I prefer to shop local.
Bring back the hospital
Don't know
Do not building anymore parks - not being used enough.
That crazy intersection at East of Railroad Ave and 1st St. Sidewalks along all streets in Whispering Oaks
Trash pick up
Police spending more time on the roads - to be seen more
Low housing for older people
Add a splash pad
I am satisfied
A variety store like we used to have. Limit growth. Patio homes with an association.
Restrict house for illegal immigrants
A couple intersections
Our water is often brown and we live in a newer home. We would love clean water.
Need a Kwik trip

More restaurants!

I would have moved here 30 years ago!

Get rid of good ol boy network. Have police actually patrol neighborhoods.

A decent restaurant

Taxes

More things to do

Nothing

More volunteering

Finish the tar in the Highlands

Street gutters - water does not flow/slimy!

Control dog barking

Community center for the general public

more things for kids to do

No more temporary sidewalk on 6th St.

All good

The water, bad corrosion on toilets and sinks.

Taxes are way too high. Ours are 4 times higher in 12 years.

More options for shopping/restaurants.

enforce muffler noise levels

Nosie of trucks in residential area. Have a Dollar General.

Splash Pad

More for the kids to do and a place for them to gather on a regular basis and after school events/games to less promote gathering elsewhere.

1st St & Railroad Ave Intersection

More positive energy

More senior housing, apartments, etc. Not low housing

Improve sewer system - my basement flooded due to something stuck; need check valves. Never compensated.

Change the speed limit back to 30 mph so the traffic slows down.

Nothing

A hospital, that is one reason we wanted to move here and now it is gone.

City calling you back after leaving 5 voicemails.

Apartment complex for seniors with underground parking.

Watch decisions! Opportunities within the community make people want to live here.

Being more open to opportunity. I always thought we were here to serve the people.

Willing to give families opportunities for entertainment.

Less coffee shops and more grocery stores.

Clean up- have residence follow ordinances. Enforce them - trailer park is within city limits.

Pick it up in its entirety and move it to Texas.

Bigger grocery store

The water

loud mufflers

more patio homes

More shopping and some fast-food options like Taco Johns or Taco Bell or Arby's.

No comment

Removal of dog kennel in Albany and lowering of speed limit.

The amount of unused stuff (garbage) around house and in the streets and alley ways

Town events (wanna help plan)

More full-time doctors
Make North Lake useable
Lower taxes
Traffic Noise
The City water
More communication from the city - Tell us what's going on in the community - Update website for info.
More lighting.
Make our opinion matter/stop spending our money
Stop people from driving golf carts with children on them.
Brown water throughout the city
Lower taxes
a walking/biking path from the north end of town to school and or downtown
Laws should be laws regardless of how long you have known the lawbreaker. No preferential treatment should be given. Such as ignoring noise complaints and just standing around talking because the officer knows them.
A restaurant/cafe
Better access to brush site/dump
Like how it is
I wish we had an aquatic center/our city water is terrible
A nice family restaurant
The city taxes are too high
Lower taxes
More single family homes - New development
More community activities
The factory cheese smell in the mornings
How the city handles ordinances. Example - Bus in next door back yard.
Have one bigger store/Walmart
Keep adding to attract families to move here.
Get more nice family sit-down restaurants
Place flashing pedestrian lights by rookies
Some council members/mayor should retire
Increase trees and trails
Be optimistic
Water quality
Reduce the barking noise from the dog kennel on Shamrock Lane
Noise ordinances for loud mufflers in residential areas.
Enforcing parking city laws!! Lake Ave is absolutely terrible, everyone parks their junk in street!
Widen Church Ave by Golf Club
More things to do, places to go
Please get a splash pad
To continue making it a family friendly community. Why a survey on a splash pad, but no survey on our garbage
More active senior citizens.
A more openminded city council: wishing they would understand the importance of local leaders not in
Pople storing trailers, boats, fish houses, campers, and extra vehicles in front of yards.
Property tax is too high. Lower property taxes
Family restaurant, police patrol traffic by school every AM and PM.
Some council members/mayor should retire
Up restaurants and quality options.

The conservative community perspective

More site down restaurants

Put a round about where the 4-way stop is.

A roundabout by the Albany Clinic

having a "Walmart" type store locally.

More places to eat out

Expensive property taxes and utilities. Water bills keep going up. More choices in services (garbage, internet,

Less trashy yards and less barking dogs!!!

More senior housing with garage space

More family-owned restaurants, more accessible lake

More activities for children.

More options for senior living

More senior housing and townhomes

Add a hospital

Not letting Bryan Schiffler control city council and doing things behind their back and not following the laws.

No Comment

No answer

Possible rec center

I greatly appreciate the letter looking for way to improve the city of Albany. I agree these items all sound great but at what cost long term? I feel as a whole, prior to investing any taxpayer's money into any additional facilities we need to address the obvious. It is well known of our cities water issues. The brown water has been around far over a year and a half with at times undrinkable. I do understand steps have been made to improve its condition, but it is still a problem almost on a weekly basis. At this point I am not 100% convinced it is completed. Imagine going to the splash pad and the water is coming out brown/yellow, that would look good

Better traffic control off of I-94

We need a family restaurant!

No answer

No answer

Intersection improvement by I-94 (stoplights).

Nothing

Speed limits and truck routes

Speed of E-bikes

Increase walkability

Small town politics

Additional restaurants or shopping choices. Would like to see music in the park (summer).

Don't have the homeowners pay for street projects, that's why we pay taxes! Where does all the tax money go?

Splash pad and outdoor pool

Double sided parking on Church Ave and Lake Ave

Wish we had a couple more fast-food options and maybe a Kwik Trip.

ADD A RESTAURANT OR TWO

REDUCE THE MAJOR LIGHT POLLUTION FROM ALBANY, CHRYSLER CENTER, WELLS CONCRETE, STORAGE UNIT NORTH OF 238, SOOLINE, CENTRACARE, MAIN STREET, AND SCHOOLS. START PLANTING TREES/HEDGES IN NORTH PARK TO ABSORB THE DEAFENING SOUNDN OF TRAFFICE FROM HWY 238 AND I-94.

MORE HOUSING FOR ELDERLY

Get a water treatment plant that softens the water so we don't need softeners. Nobody even knows what one is where I came from up by ND.

The weather

Lack of public water features or outside water activities.

Sidewalk finished on 6th street for safety.

Splash Pad

Please keep this city small. The sense of community will most likely slip if Albany grows bigger. Growth isn't always a good thing.

The water quality. The frequency of my water being orange is disturbing. The intersection by the school is better but still could have been engineered better.

More sit down restaurants

Be allowed to keep chickens.

I do not know

A new development to build homes in.

Keep property taxes lower

More child friendly activities

More things for kids to do besides just a playground.

Splash pad and park upgrade

Have more things for the kids to do to keep them out of trouble.

More small businesses

There isn't a lot of kid things to do unless you drive to st.cloud, sauk centre or Alexandria.

The wabagon trail got a little rough by the centracare so it would be nice if it was fixed up. Honestly though, that's so minor and I've been enjoying my time here.

More activities for non-athletic youth.

Getting a big fast food place that's not subway or a&w

More to do

A splash pad would be nice!

Having more things to do for all ages.

Close open enrollment, we hardly have room for children that reside in the district to begin with.

More parking for railroad Ave businesses. Relocate Kraft to open that area up for stores and parking

Splash pad

The garbage carrier.

More Ada things for kids and more kid activities

More eating options

Nothing

A community outdoor pool or splash pad

Getting soccer fields for the boys and girls teams that are growing very fastly and having that space like other schools that even have them off the property of the school

More reasons to come to Albany. Parks and amenities. Businesses. Events.

More kids activities, for all age groups. Including family fun.

Public transportation

There's not a lot I could think of, it seems we are moving in the right direction, if it's not broke don't fix it.

The trucks and there Jake breaks in town....

More things to do, restaurants

More things for kids to do

Get a swimming pool and a splash pad for the kids

We need to continue to have things for our children and grandchildren to do and keep them active and outside.

Some extra lighting on streets after dark when walking it's kinda dark and a bit scary

The garbage company

Get a splash pad

Garbage Service, sidewalk all the way down 6th street.

More activities for teenagers

Better Parks

Redoing the intersection of 238 that was recently redone. The changes have made the intersection worse/ more confusing. Also, that the golf course is city and tax payer funded. It should be a standalone business.

Continue to provide new/additional activities or opportunities for kids of all ages / young families.

Nothing

Public pool

More things to do

Nothing

The water.

More things to do for everyone

More food options, chinese, and fresh like cafe zupa , whole foods, maybe add a quick trip.

Since bearcrest closed, Albany has no sit down restaurant

More sidewalks

Get a splash pad

More family friendly activities

More diversity..

Allowing households to have chickens- not roosters, just chickens!

Lack of affordable "starter" homes for young families

Truck parking for residents

Improve water quality.

More businesses

More restaurants

City water! Quality and cost are both bad.

More community involved/sponsored events.

Move mail box to be drive up for The handicap, and elderly like in Melrose and Avon. More patio homes also.

More patio homes for the elderly too

Not much

Add a Kwik Trip

Better priced/selection of produce.

Traffic speeds, amount of kids crossing streets by themselves that are young

Improved traffic management and flow

More inclusive , less cliky.

Getting a quality family restaurant without liquor sales on site - sit down and take out

Lower property taxes

Add more family activities to do (splash pad) more family friendly restaurants, a Target superstore would be amazing so we wouldn't have to drive to St. Cloud once a week for groceries and necessities. Teals is fine but doesn't have enough of the items we use regularly so I don't shop there often.

Not sure of what I would like to change.

The people that are on the city board and the people that work for the city all have a hug chip on there shoulder and are rude and need to understand there position in the city is only needed by the people of the city. They are very unprofessional and in any normal business their attitude and disrespect to others would be tolerated.

Change the 4 way stop on railroad and 8th street.

Water quality

More to do.

Better water quality, less illegal fireworks

More activities for children- like splash pads and wading pools

Taxes to high

Terrible intersection on railroad ave/238. The three way, very confusing one by post office.

Nothing

The dirty water issue.

More affordable/low income rental housing for families with children and seniors.

Heritage Day activities. Reserve program for police.

Having a roundabout at the stop sign by the school with the weird intersection.

Dog park

Plant more trees and stop taking down already grown ones

Roads

If there are codes or policies about the look of yards (ex., junk, extra cars that don't run, tall grass) that they are taken care of so our town looks nicer. If not, why have the rules.

More things for kids to do! Splash pad, community center that has VR/simulators/ping pong.

Allowing parking on both sides of the street by the golf course.

Parking on only one side of Church Avenue; it is not wide enough to safely allow two ways of traffic and parking

Decent cafe/restaurant

Adding a splash pad and city council members that listen to the people. Not happy with being forced to switch garbage company's that provide less service.

Better restaurants

Lower taxes, water

More things for kids and teens to do

Brown water constantly

Better trash management

The new stop sign intersection off of Main Street by the clinic. It should of been a roundabout.

The corner by conoco

Nothing comes to mind currently.

How fast people drive on residential streets

Add a smoke shop

We need roundabouts not 3 way stops especially by the clinic. A yield sign and stop sign just is to much for alot
Intersection by Albany Oil.

Color of the water that comes out of the sink sometimes

Waste Management Service. City Water- Discolored and Grainy

Change the intersection to make traffic flow smoother, specifically near the school.

Drop the speed limit in residential neighborhoods down to 15/20mph

School values... lots of arragance at the school causing kids to be unco.fortable and depressed or go elsewhere or do PSEO... Superintendent, high school principal, volleyball coach, National Honor Society teacher, etc. It needs to be addressed. School also not offering enough career pathway courses or training to be successful. Too focussed on just getting their diploma instead of their careers after high school.

Recycling service every week instead of every other

Get back to a small town feel. Kind of missing the community feel.

More shade at the north park. Drinking fountains near both play grounds. Shaded benches

A splash pad for the kids to be able to get wet for the ones that can't have a pool or anything to do with water

Garbage service provider. New one is awful

West central sanitation services

More support for homeschool families.

The city water. I know it is being worked on but someone who now has to pay for water and can't use it at time is a little ridiculous. I should have to buy a second system just to have drinking water.

More citywide activities throughout the year. Citywide activities in North Park or current activities being moved

The playground equipment by my house needs upgrading. Hot slides, can't use metal.

Add residential developments and an apartment

The idiots!

Amenities of the city-updated parks, things for kids/families to utilize, more restaurant options.

Nothing



320-845-4244
P. O. Box 370
Albany, Minnesota 56307

DATE: August 30, 2024
TO: Mayor Tom Kasner and council members
FROM: Gary Winkels, Clerk/Adm. *DW*
RE: preliminary 2025 Budget – Sept. 4th

The preliminary 2025 Budget includes the following:

- Proposed 2025 levy is 6.98%.
 - 2025 levy: \$1,650,412
 - 2024 levy: \$1,542,701
 - 2023 levy: \$1,320,424
- 2024 City Tax Capacity Rate 50.24%
- 2025 Preliminary City Tax Capacity Rate 50.00%
- Local Government Aid \$838,089 or \$1,040 increase from 2024
- Employee hourly wage increase: 3%.
- Includes part time Police Administrative Assistant.
- Street budget includes setting aside \$198,500 for future street repairs/mill & overlay improvements. Funds to be deposited in specific account.
- Street Capital Equipment Fund \$90,000, an increase of \$2,500
- Park budget includes - \$15,000 future maintenance, \$36,000 future splash pad o/m and replacement, and one additional part-time employee (seasonal).
- Park Capital Equipment Fund \$34,000, an increase of \$22,000. Added Exmark, Ranger, and Infield drag.
- Debt Service (Bond) levy increase (\$22,657 or 5%) to fund existing debt for CIP Improvements.
- Debt Service (Interfund Utility fund repayment) decrease from \$160,000 to \$85,000 being project expenses were less than estimated for the 2024 Mill and Overlay improvement. Repayment estimated end date 9 years.
- As per Jason Murray, DDA, and Molly Thompsom, City Auditor, 2025 CR157 reconstruct and proposed 6th Street/3rd Avenue sidewalk improvements to be paid with available cash.
- Civic Systems Software support \$7,600 annually.
- XTONA (IT support) - \$22,000 or \$1,833/month.
- Schlenner Wenner Co. – payroll services, \$6,000+/-.
- Administrative office remodel proposed: \$20,000+/-.
- Beginning Jan. 1, 2025: 4% increase water and sewer rates.
- Final certification of levy to Stearns County: Sept. 18th council meeting.
- Truth and Taxation public hearing December 4th for proposed 2025 budget

- Public Hearing notice to be mailed by county to property owners in November.
- Employee Benefits are as follows:
 - 2024 Monthly Health Insurance Premiums are as follows:
 - Family \$1,455 and Single \$547
 - 2025 estimate 5% increase
 - 2024 Plan Selection option annual deductible:
 - Single: \$1,500 to \$4,000
 - Family: \$2,800 to \$6,400 per family member and/or \$3,000 to \$8,000 per family
 - City pays up to \$850 and 50% thereafter per month health insurance
 - 2025 Estimated cost to employees with family coverage is \$650/mo.
- Life, Short term disability (26 weeks)
- Dental insurance (\$38/mo.)
- Several employees opted to be paid cash in lieu of city insurance having selected to be on their spouse's insurance plan. This is a savings to the city.
- Health Savings Account (HSA): City contribution to employee \$75/month single and \$150/month family (City pays \$3/month fee for single/family)
- VEBA post-retirement benefit

TOTAL TAX CAPACITY RATE							
	2018	2019	2020	2021	2022	2023	2024
Total Tax Cap. Rate							
Albany City:	41.6551	41.8634	42.6033	44.7479	43.3499769	45.198639	50.23687
AHS:	34.8455	34.7515	30.2417	30.6431	29.6235699	32.37585037	31.58113
Regional Rail:	0.1049	0.099	0.0639	0.0389	0.02773306	0.02487014	0.050156
Stearns Co.:	52.4877	51.4009	50.3976	48.6017	48.4308654	42.94525111	40.07741
County HRA:	0.3718	0.3497	0.3384	0.3289	0.31587552	0.2749678	0.26104
Total Tax Rate:	129.465	128.4645	123.6449	124.3605	121.748021	120.8195784	122.2066

"CITY" TAX RATES

CITY	2021	2022	2023	2024
Albany	44.75	43.35	45.19	50.233
Avon	66.49	64.48	63.18	63.573
Freeport	74.98	73.36	68.51	69.265
Paynesville	44.76	50.14	49.24	54.106
Sauk Centre	48.06	48.98	46.42	46.023
St. Joseph	58.68	61.49	59.74	63.687
Cold Spring	45.41	46.59	43.59	45.357
Melrose	59.62	49.55	47.65	49.298
Holdingsford	50.53	49.51	43.63	37.137



320-845-4244
P. O. Box 370
Albany, Minnesota 56307

Example 1: Residential homestead with an estimated market value of \$350,000.

The value of the property has increased therefore the exclusion amount for this property will be reduced.

Since this property has a value over \$95,000, we need to determine the amount of value over \$95,000. Next, multiply that amount by 9% to determine the reduction from the maximum of \$38,000. This example has an exclusion amount of \$15,050.

Homestead Market Value Exclusion Calculation

1. Initial/Maximum Exclusion: $\$95,000 \times 40\% = \$38,000$
2. Value over \$95,000: $\$350,000 - \$95,000 = \$255,000$
3. Benefit Reduction Amount: $\$255,000 \times 9\% = \$22,950$
4. Final Exclusion Amount: $\$38,000 - \$22,950 = \$15,050$
5. Taxable Market Value: $\$350,000 - \$15,050 = \$334,950$

As you can see, this reduces the property's taxable value from \$350,000 to \$334,950.

Example 2: Residential homestead with an estimated market value of \$150,000.

Homestead Market Value Exclusion Calculation

6. Initial/Maximum Exclusion: $\$95,000 \times 40\% = \$38,000$
7. Value over \$95,000: $\$150,000 - \$95,000 = \$55,000$
8. Benefit Reduction Amount: $\$55,000 \times 9\% = \$4,950$
9. Final Exclusion Amount: $\$38,000 - \$4,950 = \$33,050$
10. Taxable Market Value: $\$150,000 - \$33,050 = \$116,950$

This reduces the property's taxable value from \$150,000 to \$116,950.

More information: www.revenue.state.mn.us/homestead

HOW YOUR PROPERTY TAXES ARE CALCULATED

1. CALCULATE FINAL TAX RATE TO BE APPLIED TO ALL PROPERTIES IN YOUR COMMUNITY

$$\begin{array}{rclcl} \$1,542,701 & -/- & \$3,070,854 & = & 50.236\% \\ \text{Total Property Tax Revenue} & & \text{Total Net Tax Capacity} & & \text{Final Tax Rate for your} \\ \text{needed (Levy)} & & \text{(The valuation of property} & & \text{community, for taxes} \\ & & \text{based on market value and} & & \text{payable next year.} \\ & & \text{class rates.)} & & \end{array}$$

2. DETERMINE YOUR PROPERTY'S TAXABLE VALUE (\$150,000 EMV)

$$\begin{array}{rclcl} \$116,950 & \times & 1\% & = & \$1,169.50 \\ \text{Your Home's} & & \text{Mandated Class Rate} & & \text{Home Tax Capacity} \\ \text{Taxable Market Value} & & \text{(Home)} & & \\ \text{Based on Exclusion} & & & & \end{array}$$

3. DETERMINE THE "CITY" TAX ON YOUR HOME

$$\begin{array}{rclcl} \$1,169.50 & \times & 50.236\% & = & \$587.51 \\ \text{Home Tax Capacity} & & \text{"City" of Albany} & & \text{City Property Tax} \\ & & & & \text{you must pay} \end{array}$$

PRESTO!

YOUR "CITY" TAX: \$587.51

CITY OF ALBANY
2025 BUDGET - September 4

Estimated Income	2023	2024	2025	Change
Income (LGA ,charges, etc.)	\$1,109,519	\$1,191,849	\$1,219,689	\$27,840
Property Tax	\$828,924	\$1,002,756	\$1,000,610	(\$2,146)
Total Income	\$1,938,443	\$2,194,605	\$2,220,299	\$25,694

Department Expenses	2023	2024	2025	Change
Administration	\$397,550	\$386,975	\$347,275	(\$39,700)
Council	\$18,000	\$18,000	\$18,000	\$0
Elections	\$4,000	\$14,500	\$3,000	(\$11,500)
Police	\$607,645	\$688,516	\$705,298	\$16,782
Fire	\$261,418	\$269,368	\$277,477	\$8,109
Streets	\$435,090	\$491,256	\$634,116	\$142,860
Park	\$122,840	\$115,190	\$193,733	\$78,543
Library	\$17,900	\$18,800	\$17,900	(\$900)
Misc.	\$74,000	\$192,000	\$23,500	(\$168,500)
Total Expenses	\$1,938,443	\$2,194,605	\$2,220,299	\$25,694

1%

Debt Service Levy

PIR Bonds	\$423,500	\$453,145	\$475,802	\$22,657
Interfund utility payment overlay			\$85,000	\$85,000
Total Debt Service	\$423,500	\$453,145	\$560,802	\$107,657

24%

Tax Abatement Levy

Wells Concrete Joe P (2024)	\$68,000	\$86,800	\$89,000	\$2,200
Total Tax Abatement	\$68,000	\$86,800	\$89,000	\$2,200

Total Levy	\$1,320,424	\$1,542,701	\$1,650,412	\$107,711
-------------------	--------------------	--------------------	--------------------	------------------

% Levy Increase 2025

6.98%

2024 City Tax Capacity Rate	50.24%
-----------------------------	--------

Proposed initial tax cap rate	50.00%
-------------------------------	--------

**CITY OF ALBANY - 2025
ALBANY, MINNESOTA**

PRELIMINARY 09/04/24

	Y.T.D					
	30-Jun					
ADMINISTRATION	2023	2023 Actual	2024	2024	2025	CHANGE
Full-time Employees regular	\$243,500	\$119,380	\$196,000	\$72,942	\$195,875	(\$125)
Employer Paid Health	\$22,000	\$13,150	\$22,000	\$3,739	\$15,000	(\$7,000)
Employer Paid H.S.A.	\$5,000	\$1,800	\$3,600	\$0	\$3,600	\$0
Workers Compensation	\$1,600	\$1,415	\$1,600	\$0	\$1,600	\$0
Office Supplies	\$9,000	\$2,886	\$8,000	\$1,772	\$4,000	(\$4,000)
Other Professional Services (IT)	\$7,500	\$52,337	\$27,500	\$20,615	\$7,500	(\$20,000)
Auditing and Acct'g Service	\$38,500	\$47,344	\$38,500	\$19,005	\$30,000	(\$8,500)
Engineering fees	\$1,500	\$5,464	\$1,500	\$528	\$2,000	\$500
Legal Fees	\$14,000	\$21,128	\$14,000	\$3,173	\$14,000	\$0
Assessor Fees	\$15,000	\$14,705	\$15,000	\$14,681	\$15,000	\$0
Planning Commission	\$1,000	\$963	\$1,000	\$0	\$1,000	\$0
Telephone	\$5,250	\$2,995	\$5,250	\$1,573	\$4,500	(\$750)
General Notices and Pub. Inf.	\$5,300	\$5,494	\$6,625	\$683	\$5,000	(\$1,625)
General Liability Insurance	\$5,000	\$4,340	\$5,000	\$0	\$5,000	\$0
Electric Utilities	\$3,700	\$921	\$3,700	\$335	\$2,500	(\$1,200)
Gas Utilities	\$1,200	\$1,073	\$1,200	\$458	\$1,200	\$0
Repairs/Maint Buildings	\$4,500	\$3,749	\$4,500	\$524	\$4,500	\$0
Repairs/Maint Machinery/Equip	\$2,000	\$212	\$20,000	\$0	\$20,000	\$0
Dues, Subscriptions and Fees	\$12,000	\$43,232	\$12,000	\$12,134	\$15,000	\$3,000
ADMINISTRATION TOTAL	\$397,550	\$342,588	\$386,975	\$152,162	\$347,275	(\$39,700)
						-10.26%

COUNCIL	2023	2023 Actual	2024	2024	2025	CHANGE
Wages	\$18,000	\$17,332	\$18,000	\$1,803	\$18,000	\$0
COUNCIL TOTAL	\$18,000	\$17,332	\$18,000	\$1,803	\$18,000	\$0

ELECTIONS	2023	2023 Actual	2024	2024	2025	CHANGE
Temporary employees	\$0	\$0	\$9,500	\$1,853	\$0	(\$9,500)
xxxx	\$0	\$0	\$0		\$0	\$0
Repairs/Training/Equip rentals	\$4,000	\$2,025	\$5,000	\$330	\$3,000	(\$2,000)
ELECTIONS TOTAL	\$4,000	\$2,025	\$14,500	\$2,183	\$3,000	(\$11,500)

POLICE DEPARTMENT	2023	2023 Actual	2024	2024	2025	CHANGE
Full time employees regular	\$454,295	\$453,109	\$528,446	\$261,703	\$485,538	(\$42,908)
Health Insurance/HSA	\$52,650	\$53,047	\$56,870	\$27,843	\$52,860	(\$4,010)
Workers Compensation Ins.	\$14,000	\$24,132	\$14,000	\$4,780	\$25,000	\$11,000
Uniform Allowance	\$2,500	\$9,273	\$3,000	\$1,096	\$4,500	\$1,500
Office Supplies	\$4,000	\$2,341	\$4,000	\$452	\$4,000	\$0
Training and Instruction	\$5,000	\$9,873	\$5,000	\$6,352	\$10,000	\$5,000
Motor Fuels	\$8,500	\$9,314	\$8,500	\$4,380	\$10,000	\$1,500
Legal Fees (city attmy)	\$14,000	\$16,061	\$16,000	\$9,960	\$23,000	\$7,000
Telephone	\$3,500	\$5,427	\$3,500	\$2,274	\$4,500	\$1,000
General Liblity Insurance	\$8,000	\$8,647	\$8,000	\$0	\$9,000	\$1,000
Electric Utilities	\$2,200	\$704	\$2,200	\$251	\$1,400	(\$800)
Gas Utilities	\$1,000	\$526	\$1,000	\$317	\$1,000	\$0
Repairs/Maint. Buildings	\$3,000	\$5,879	\$3,000	\$1,269	\$3,000	\$0
Repairs/Maint. Machinery/Equip	\$20,000	\$24,095	\$20,000	\$7,259	\$20,000	\$0
Computer O/M	\$7,500	\$4,900	\$7,500	\$450	\$7,500	\$0
Dues and subscriptions (co. contract)	\$7,500	\$19,136	\$7,500	\$4,651	\$29,000	\$21,500
Capital Outlay	\$0	\$43,251	\$0	\$0	\$15,000	\$15,000
POLICE TOTAL	\$607,645	\$689,715	\$688,516	\$333,037	\$705,298	\$16,782

2.44%

FIRE DEPARTMENT	2023	2023 Actual	2024	2024	2025	CHANGE
Wages/tmg/meetings	\$84,000	\$64,852	\$86,000	\$3,735	\$88,580	\$2,580
Training	\$6,700	\$8,930	\$6,700	\$4,774	\$6,700	\$0
workers compensation	\$12,000	\$10,774	\$12,000	\$272	\$12,000	\$0
Fire Pension Contribution	\$51,500	\$59,592	\$51,500	\$0	\$51,500	\$0
Supplies	\$2,900	\$2,477	\$2,900	\$300	\$2,900	\$0
Legal Fees	\$150	\$562	\$150	\$68	\$300	\$150
Telephone	\$2,300	\$1,394	\$2,300	\$718	\$2,300	\$0
Legal Notices Pub/dues/Subscription	\$3,500	\$5,906	\$3,500	\$3,231	\$6,000	\$2,500
General Liblity Insurance	\$11,000	\$8,603	\$11,000	\$0	\$11,000	\$0
Electric Utilities	\$3,100	\$1,540	\$3,100	\$667	\$3,800	\$700
Gas Utilities	\$2,600	\$3,010	\$2,600	\$2,219	\$3,800	\$1,200
Repairs/Maint Buildings	\$15,000	\$6,347	\$15,000	\$4,622	\$15,000	\$0
Repairs/Maint Machinery/Equip	\$30,000	\$37,944	\$35,000	\$12,698	\$35,000	\$0
Capital Outlay	\$31,668	\$31,668	\$32,618	\$0	\$33,597	\$979
Other Equip. DNR/New	\$5,000	\$0	\$5,000	\$0	\$5,000	\$0
FIRE TOTAL	\$261,418	\$243,599	\$269,368	\$33,303	\$277,477	\$8,109

3.01%

HWYS,STREETS, & ROADS	2023	2023 Actual	2024	2024	2025	CHANGE
Full time employees regular	\$113,200	\$122,237	\$123,956	\$39,214	\$133,516	\$9,560
Part Time employees	\$0	\$0	\$0	\$0	\$4,500	\$4,500
Health Insurance	\$18,000	\$13,869	\$18,000	\$11,769	\$18,000	\$0
Employer Paid H.S.A.	\$4,500	\$0	\$4,000	\$0	\$0	(\$4,000)
Workers Compensation	\$6,000	\$6,008	\$6,000	\$0	\$6,500	\$500
Office Supplies	\$1,300	\$1,113	\$1,300	\$846	\$1,300	\$0
Training/Instruction/dues/fees/clothing	\$6,000	\$14,134	\$6,000	\$5,145	\$8,000	\$2,000
Street Maintenance Materials	\$80,000	\$47,171	\$60,000	\$13,287	\$30,000	(\$30,000)
Engineering fees	\$8,000	\$4,697	\$8,000	\$1,116	\$6,000	(\$2,000)
Telephone	\$1,890	\$2,187	\$2,300	\$967	\$2,300	\$0
General Notices and Publication	\$250	\$0	\$250	\$475	\$250	\$0
General Liability Insurance	\$10,000	\$6,612	\$11,000	\$0	\$10,000	(\$1,000)
Electric Utilities	\$47,250	\$42,567	\$47,250	\$17,481	\$47,250	\$0
Gas Utilities	\$4,200	\$4,309	\$4,200	\$2,734	\$5,000	\$800
Repairs/Maint Buildings	\$4,500	\$4,423	\$4,500	\$9,807	\$8,000	\$3,500
Repairs/Maint Machinery/Equip	\$25,000	\$35,972	\$25,000	\$13,087	\$25,000	\$0
Machinery Rentals/Hire	\$5,000	\$3,891	\$5,000	\$661	\$5,000	\$0
snow removal	\$30,000	\$35,626	\$35,000	\$13,290	\$35,000	\$0
Street maintenance CIP Fund	\$0	\$0	\$42,000	\$42,000	\$198,500	\$156,500
Capital Outlay	\$70,000	\$70,000	\$87,500	\$87,500	\$90,000	\$2,500
STREET TOTAL	\$435,090	\$414,816	\$491,256	\$259,379	\$634,116	\$142,860

29.08%

PARK DEPARTMENT	2023	2023 Actual	2024	2024	2025	CHANGE
Full time employees regular	\$44,000	\$32,296	\$40,000	\$11,002	\$24,941	(\$15,059)
Part Time employees		\$10,384		\$5,100	\$33,892	\$33,892
Temporary employees regular (Board)	\$500	\$220	\$500	\$0	\$500	\$0
Health Insurance	\$6,500	\$135	\$2,500	\$0	\$1,000	(\$1,500)
Employer Paid H.S.A.	\$1,000	\$0	\$1,100	\$37	\$0	(\$1,100)
Workers Comp Insurance	\$1,500	\$1,081	\$1,500	\$0	\$1,500	\$0
Operating Supplies	\$3,675	\$1,323	\$3,675	\$333	\$3,675	\$0
xx	\$0	\$0	\$0	\$0	\$0	\$0
General Liability Insurance	\$6,500	\$5,784	\$9,750	\$0	\$9,750	\$0
Electric Utilities	\$2,940	\$1,563	\$2,940	\$485	\$2,950	\$10
Gas Utilities	\$525	\$488	\$525	\$205	\$525	\$0
Repairs/Maintenance Building	\$3,200	\$3,124	\$3,200	\$5,879	\$6,000	\$2,800
Repairs/Maint Machinery/Equip	\$30,000	\$7,677	\$30,000	\$1,825	\$30,000	\$0
Machinery Rentals/Hire	\$3,000	\$366	\$3,000	\$407	\$3,000	\$0
Splashpad O/M and replacement	\$0	\$0	\$0	\$0	\$36,000	\$36,000
Summer Recreation	\$1,000	\$750	\$1,000	\$0	\$1,000	\$0
Capital OUTLAY Equipment	\$15,000	\$15,000	\$12,000	\$12,000	\$34,000	\$22,000
Dues/subscriptions/legal fees	\$3,500	\$9,673	\$3,500	\$4,252	\$5,000	\$1,500
PARK TOTAL	\$122,840	\$89,864	\$115,190	\$41,525	\$193,733	\$78,543

68.19%

LIBRARY DEPARTMENT	2023	2023 Actual	2024	2024	2025	CHANGE
General Liability Insurance	\$4,500	\$3,517	\$5,400	\$0	\$4,500	(\$900)
Electric Utilities	\$3,800	\$3,442	\$3,800	\$1,090	\$3,800	\$0
Gas Utilities	\$1,100	\$903	\$1,100	\$541	\$1,100	\$0
Repairs/Maint Buildings	\$8,500	\$7,417	\$8,500	\$2,490	\$8,500	\$0
LIBRARY TOTAL	\$17,900	\$15,279	\$18,800	\$4,121	\$17,900	(\$900)

-4.79%

MISC	2023	2023 Actual	2024	2024	2025	CHANGE
Building Official/state surcharge fees	\$30,000	\$139,837	\$30,000	\$94,433	\$22,500	(\$7,500)
EDA Storefront Imp. Program-2023	\$42,000	\$42,000	\$0	\$0	\$0	\$0
Interfund Utility repayment of 2024 Mill ar	\$0	\$0	\$160,000	\$0	\$0	(\$160,000)
Emergency Management Dir /siren	\$2,000	\$1,000	\$2,000	\$815	\$1,000	(\$1,000)
MISC TOTAL	\$74,000	\$182,837	\$192,000	\$95,248	\$23,500	(\$168,500)

ESTIMATED INCOME	2023	2023 Actual	2024	2024	2025	CHANGE
Licenses and Permits	\$12,000	\$9,616	\$12,000	\$9,035	\$12,000	\$0
Apartment License fee	\$1,400	\$575	\$1,000	\$665	\$1,000	\$0
Building Permits	\$30,000	\$176,477	\$30,000	\$42,874	\$30,000	\$0
Fire Insurance Refund	\$1,500	\$399	\$1,500	\$0	\$1,000	(\$500)
Fire State Aid	\$29,000	\$35,343	\$32,000	\$0	\$37,300	\$5,300
Fire Protection Services, CIP	\$73,000	\$72,673	\$75,000	\$88,641	\$80,000	\$5,000
Fire Calls, Grants, Trng. Refund	\$30,000	\$50,374	\$30,000	\$3,130	\$30,000	\$0
Police Insurance Refund	\$0	\$436	\$0	\$0	\$0	\$0
Police TZD, other grants	\$3,500	\$0	\$3,500	\$0	\$3,500	\$0
Police SRO AHS fee & donations	\$35,000	\$38,827	\$40,000	\$39,782	\$41,000	\$1,000
Police state aid & trng refund	\$40,000	\$50,165	\$35,000	\$752	\$45,000	\$10,000
Police accident reports	\$1,000	\$120	\$1,000	\$25	\$500	(\$500)
Police Fines and Forfeits	\$16,000	\$9,437	\$16,000	\$4,352	\$15,000	(\$1,000)
Police surplus property	\$500	\$0	\$500	\$0	\$0	(\$500)
Local Government Aid	\$757,619	\$757,619	\$837,049	\$0	\$838,089	\$1,040
Snow Rem. HWY 238/gas refund	\$8,500	\$11,205	\$10,000	\$2,550	\$10,000	\$0
Zoning and Subdivision fees	\$3,500	\$12,379	\$3,500	\$690	\$3,500	\$0
Assessment Search Fees	\$1,200	\$840	\$1,200	\$180	\$1,200	\$0
Highways and Street Charge	\$7,000	\$16,036	\$3,500	\$9,917	\$3,500	\$0
Golf Fees (Cart License)	\$800	\$1,160	\$1,100	\$1,040	\$1,100	\$0
Park Fees	\$3,500	\$4,185	\$3,500	\$3,002	\$3,500	\$0
LMCIT Dividend/refund	\$4,000	\$729	\$4,000	\$0	\$4,000	\$0
Interest Earnings	\$15,000	\$38,675	\$15,000	\$0	\$15,000	\$0
Cable TV Revenues	\$32,000	\$42,227	\$32,000	\$33,149	\$40,000	\$8,000
Misc. revenue	\$3,500	\$9,390	\$3,500	\$0	\$3,500	\$0
SUB-TOTAL INCOME	\$1,109,519	\$1,338,887	\$1,191,849	\$239,784	\$1,219,689	\$27,840
PROPERTY TAX	\$828,924		\$1,002,756		\$1,000,610	(\$2,146)
TOTAL INCOME	\$1,938,443		\$2,194,605		\$2,220,299	\$25,694

ESTIMATED OUTLAY	2023	2023 Actual	2024	2024	2025	CHANGE
Administration	\$397,550		\$386,975	\$152,162	\$347,275	(\$39,700)
Council	\$18,000		\$18,000	\$1,803	\$18,000	\$0
Elections	\$4,000		\$14,500	\$2,183	\$3,000	(\$11,500)
Police	\$607,645		\$688,516	\$333,037	\$705,298	\$16,782
Fire	\$261,418		\$269,368	\$33,303	\$277,477	\$8,109
HWYS, Streets & Roadway	\$435,090		\$491,256	\$259,379	\$634,116	\$142,860
Park	\$122,840		\$115,190	\$41,525	\$193,733	\$78,543
Library	\$17,900		\$18,800	\$4,121	\$17,900	(\$900)
Misc.	\$74,000		\$192,000	\$95,248	\$23,500	(\$168,500)
TOTAL ESTIMATED OUTLAY	\$1,938,443		\$2,194,605	\$922,761	\$2,220,299	\$25,694

1%

DEBT SERVICE	2023	2023 Actual	2024	2025	CHANGE
Bonds/ utility interfund loans W/S	\$423,500		\$453,145	\$560,802	\$107,657
DEBT SERVICE TOTAL	\$423,500		\$453,145	\$560,802	\$107,657

24%

TAX ABATEMENT	2023	2023 Actual	2024	2025	CHANGE
xxx	\$0		\$16,800	\$0	(\$16,800)
Wells Concrete/Petermell/OCS	\$68,000		\$70,000	\$89,000	\$19,000
TAX ABATEMENT TOTAL	\$68,000		\$86,800	\$89,000	\$2,200

TOTAL LEVY	\$1,320,424		\$1,542,701		\$1,650,412	\$107,711
-------------------	--------------------	--	--------------------	--	--------------------	------------------

Proposed 2025

% inc.

6.98%



P. O. Box 370
 Albany, Minnesota 56307

Proposed 2025 wage increase for the following employees: 09/04/24

	2024	2025
Joe Mergen Group IX	\$46.85	\$48.25
Jeff Kociemba Group VII	\$29.50	\$30.39
Kurt Beuning Group V	\$28.00	\$28.84
Matt Gannon Group X	\$41.00	\$42.73
JoAnna Bigler Group VIII	\$29.16	\$30.62
Derrick Bjork Group VIII	\$29.16	\$30.62
Bryce Sloan Group VIII	\$29.16	\$30.03
Seth Adams Group VIII	\$29.16	\$29.66
Gary Winkels Group XI	\$42.50	\$43.78
Heather Cruz Group VII	\$30.00	\$30.90

Molly Hoppe, Adm. Assist PT	\$23.00	\$23.69
Rolland Hanson, Park PT Mower	\$14.05	\$14.47
Stan Kortenbusch, Park PT Mower	\$14.05	\$14.47
Sherri Burg, Adm Mntc PT	\$22.51	\$23.19
Lucas Goebel, Street, PT	\$14.05	\$14.47
Park PT TBD	\$0.00	\$21.05
Police PT	\$0.00	\$22.50

CAPITAL INVESTMENT (EQUIPMENT) PROGRAM 2025

YEAR	DUMP TRAILER	2010 CASE 4X4	2020 MACK	2020 Cat	2020 PICKUP	2015 PICKUP	Snow Blower	96 dura patcher	2016 SWEEPER	*2020 Kabota	*2014 Kubota	2023 Exmark	*2023 DODGE W/flow	2021 Ranger	2024 Infield dreb	YEARLY PAYMENT
2001																
2002																
2003																
2004																
2005																
2006																
2007																\$ 25,000
2008																\$ 25,000
2009																\$ -
2010																\$ -
2011																\$ -
2012																\$ 2,500
2013																\$ 2,500
2014																\$ 4,500
2015		\$ 10,000						\$ 0			\$ 3,000					\$ 17,500
2016		\$ 15,000					\$ 4,500	\$ 10,000		\$ 4,000						\$ 19,500
2017		\$ 15,000					\$ 4,500	\$ 10,000		\$ 5,000						\$ 33,500
2018		\$ 15,000					\$ 4,500	\$ 10,000		\$ 5,000						\$ 44,500
2019		\$ 15,000					\$ 4,500	\$ 10,000		\$ 5,000						\$ 44,500
2020		\$ 15,000					\$ 5,000	\$ 10,000		\$ 5,000						\$ 50,000
2021							\$ 5,000	\$ 10,000		\$ 5,000						\$ 62,000
2022							\$ 5,000	\$ 10,000		\$ 5,000						\$ 77,500
2023	\$ 5,000	\$ 10,000	\$ 20,000	\$ 15,000	\$ 10,000	\$ 10,000	\$ 10,000	\$ 10,000	\$ 10,000	\$ 5,000	\$ 2,500	\$ 10,000	\$ 7,000	\$ 4,000	\$ 2,500	\$ 92,500
2024	\$ 10,000	\$ 7,500	\$ 5,000	\$ 20,000	\$ 15,000	\$ 5,000	\$ 2,500	\$ 10,000	\$ 10,000	\$ 7,500	\$ 7,500	\$ 5,000	\$ 7,000	\$ 4,000	\$ 2,500	\$ 99,500
2025	\$ 15,000	\$ 17,500	\$ 80,000	\$ 72,000	\$ 27,500	\$ 45,000	\$ 119,000	\$ 90,000	\$ 100,000	\$ 30,000	\$ 47,000	\$ 15,000	\$ 24,500	\$ 4,000	\$ 2,500	\$ 124,000

Pay in September each year.

Payable to Stearns Bank

Sireet >>>>>>>> \$ 90,000.00
 *Park >>>>>>>> \$ 34,000.00
 Check Amount: \$ 124,000.00

43100-500 c. CIP Equip. funds
 45200-500 c. CIP Equip. funds

DO NOT MAIL

CITY OF ALBANY

SEWER FUND

<u>Account</u>	<u>Revenue Account Description</u>	<u>2019</u>	<u>2020</u>	<u>2021</u>	<u>2022</u>	<u>2023</u>
602-34207	Insurance Refund	-	548	1,473	1,089	25,331
602-36000	Pension Revenue	95	117	80	237	4
602-36100	Special Assessments	-	-	-	-	733
602-36210	Interest Earnings	9,993	20,771	4,973	22,800	55,915
602-36211	Interest Income on Note Receivable	9,416	6,385	3,247	-	-
602-37200	Sewer Sales	225,352	229,828	287,275	263,052	294,809
602-37201	Flat Charge	106,193	109,468	114,646	117,651	123,904
602-37202	BOD	59,393	84,893	94,145	77,821	62,874
602-37203	TSS	22,509	28,073	34,719	24,514	25,181
602-37204	PO	36,682	40,491	30,894	33,818	25,654
602-37205	SWR CONSTR REIM	420	-	38,115	-	6,706
602-37250	Sewer Connect/Reconnect Fee	14,620	4,386	10,234	5,923	47,104
602-37260	Swr Penalty	8,609	4,392	2,088	3,799	12,608
602-37262	Sewer Supply Reim	628	4,773	-	-	-
602-37270	Storm Water Drainage Fee	22,386	22,361	22,484	22,356	24,346
602-39102	Capital Contribution	-	-	-	370,656	-
	Total:	516,296	556,486	644,373	943,716	705,169
<u>Account</u>	<u>Expense Account Description</u>	<u>2019</u>	<u>2020</u>	<u>2021</u>	<u>2022</u>	<u>2023</u>
602-41000-710	Transfers Out	72,427	75,000	75,000	282,094	100,000
602-47000-610	Interest	9,560	6,567	3,470	267	-
602-49450-101	Full-Time Employees Regular	48,785	52,859	47,485	41,359	39,805
602-49450-103	Part-Time Employees	106	-	-	-	-
602-49450-106	PTO	2,330	2,621	3,626	4,475	3,256
602-49450-107	Vacation Pay	2,381	436	(3,861)	3,304	1,445
602-49450-108	Holiday Pay	1,887	1,936	1,842	2,222	2,244
602-49450-120	Pension Expense	(6,107)	(3,581)	(3,717)	8,347	(1,580)
602-49450-121	PERA	3,972	4,381	3,981	3,609	3,223
602-49450-122	FICA	3,925	4,509	3,769	4,953	3,497
602-49450-127	Employer Paid HSA	710	-	225	959	-
602-49450-131	Employer Paid Health	6,615	4,743	2,161	1,193	31
602-49450-133	Employer Paid Dental	-	-	-	-	55
602-49450-151	Worker's Comp Insurance Prem	1,204	1,549	945	1,818	2,461
602-49450-200	Office Supplies (GENERAL)	3,406	1,590	923	2,537	1,797
602-49450-207	Computer Supplies	1,123	500	-	332	-
602-49450-208	Training and Instruction	630	23	-	-	-
602-49450-210	Operating Supplies (GENERAL)	83,803	73,112	76,375	70,681	81,242
602-49450-301	Auditing and Acct'g Services	238	-	395	2,878	1,024
602-49450-303	Engineering Fees	8,190	3,018	8,354	7,724	11,039
602-49450-304	Legal Fees	-	292	557	383	101
602-49450-321	Telephone	1,283	1,021	673	-	-
602-49450-352	Publication	-	-	-	-	47
602-49450-361	General Liability Ins	5,435	5,509	5,905	6,457	8,258
602-49450-381	Electric Utilities	57,361	86,307	95,606	82,814	100,311
602-49450-383	Gas Utilities	1,127	982	965	1,011	1,488
602-49450-401	Repairs/Maint Buildings	349	1,738	11	123	2,420
602-49450-404	Repairs/Maint Machinery/Equip	42,574	23,393	41,872	29,911	34,375
602-49450-405	Depreciation (GENERAL)	192,278	190,529	189,100	188,246	197,953
602-49450-407	Testing	10,349	8,142	7,658	6,255	7,888
602-49450-416	Machinery Rentals/Hire/Eng	375	806	181	-	-
602-49450-433	Dues/Subsc/Fees	6,880	8,996	9,657	15,883	33,352
602-49450-650	Contributed Capital In	-	-	-	-	-
	Total:	563,196	556,978	573,158	769,835	635,732
	NET INCOME (LOSS)	(46,900)	(492)	71,215	173,881	69,437

Additional Cash Inflows (Outflows)

Debt Payments	(83,000)	(86,000)	(89,000)	(92,000)	-
Purchase of Capital Assets	-	-	(24,333)	(178,384)	(103,910)
Receipts on/(Advances to) Other Funds	-	25,000	50,000	50,000	-

Amounts are hand keyed per the Statement of Cash Flows-

CITY OF ALBANY

WATER FUND

<u>Account</u>	<u>Revenue Account Description</u>	<u>2019</u>	<u>2020</u>	<u>2021</u>	<u>2022</u>	<u>2023</u>
601-34207	Insurance Refund	-	1,941	5,257	3,327	1,010
601-36000	Pension Revenue	98	138	91	256	4
601-36100	Special Assessments	-	-	-	-	1,652
601-36210	Interest Earnings	6,771	23,418	5,306	18,896	63,630
601-37100	Water Sales	1,136	7,201	9,236	19,946	34
601-37101	Water	284,031	356,105	405,086	342,000	413,975
601-37102	INDUSTRIAL Water	154,545	146,565	141,970	166,759	167,755
601-37103	Water Access	181,428	188,624	194,912	198,921	217,900
601-37105	Water Meter Reim.	3,963	2,037	1,449	-	-
601-37110	Water Meter Fee - Water Bills	-	47,944	58,022	57,994	60,320
601-37150	Water Connect/Rconnect Fee	14,687	4,486	10,510	5,923	48,760
601-37160	Water Penalty	8,584	5,472	3,640	7,265	14,427
601-37161	WTR CONSTR REIM	-	11,119	2,732	-	-
601-37263	WATER SUPPLY REIM	1,115	1,390	82	3,312	1,309
601-39102	Capital Contribution	-	-	-	230,325	-
Total:		656,358	796,440	838,293	1,054,924	990,776

<u>Account</u>	<u>Expense Account Description</u>	<u>2019</u>	<u>2020</u>	<u>2021</u>	<u>2022</u>	<u>2023</u>
601-41000-700	Transfers In	(997)	(904)	(881)	-	-
601-41000-710	Transfers Out	67,426	75,000	75,000	282,093	100,000
601-47000-610	Interest	36,516	31,261	25,909	20,450	14,883
601-49400-101	Full-Time Employees Regular	50,561	64,713	47,693	40,276	40,663
601-49400-103	Part-Time Employees	129	-	-	-	-
601-49400-106	PTO	2,330	2,621	3,626	4,475	3,256
601-49400-107	Vacation Pay	2,484	736	(1,958)	3,539	1,897
601-49400-108	Holiday Pay	1,887	1,862	1,842	2,222	2,243
601-49400-120	Pension Expense	(3,103)	2,051	(6,058)	7,929	(8,806)
601-49400-121	PERA	4,040	5,275	4,009	3,501	3,286
601-49400-122	FICA	4,036	5,467	3,811	4,838	4,514
601-49400-127	Employer H.S.A. Contrib.	547	-	225	958	900
601-49400-131	Employer Paid Health	5,024	4,267	1,993	982	6,743
601-49400-133	Employer Paid Dental	-	-	-	-	30
601-49400-134	Employer Paid Life	-	-	-	-	14
601-49400-135	Employer Paid STD	-	-	-	-	307
601-49400-151	Worker's Comp Insurance Prem	747	1,381	2,419	1,867	2,097
601-49400-200	Office Supplies (GENERAL)	3,406	1,596	927	3,215	1,796
601-49400-207	Computer Supplies	1,174	500	-	332	-
601-49400-208	Training and Instruction	368	10	100	610	965
601-49400-210	Operating Supplies (GENERAL)	31,023	36,462	27,378	63,635	40,532
601-49400-220	Repair/Maint Supply (GENERAL)	-	64	-	-	-
601-49400-301	Auditing and Acctg Services	238	-	-	2,878	1,024
601-49400-303	Engineering Fees	2,231	1,602	632	-	-
601-49400-304	Legal Fees	-	-	557	-	259
601-49400-321	Telephone	2,311	1,930	1,795	1,077	1,092
601-49400-352	General Notices and Pub Info	932	852	228	185	243
601-49400-361	General Liability Ins	18,363	19,521	21,170	21,431	20,430
601-49400-381	Electric Utilities	28,662	24,148	16,279	32,787	27,889
601-49400-383	Gas Utilities	3,167	3,867	3,578	4,254	4,745
601-49400-387	Water Sales Tax	-	11	-	-	-
601-49400-401	Repairs/Maint Buildings	8,436	832	659	2,366	6,322
601-49400-404	Repairs/Maint Machinery/Equip	38,102	39,785	27,312	24,803	18,947
601-49400-405	Depreciation (GENERAL)	228,092	222,922	228,889	227,805	233,999
601-49400-407	Testing	2,024	790	1,470	3,090	1,051
601-49400-416	Machinery Rentals/Hire/Eng	162	180	145	89	-
601-49400-430	Miscellaneous (GENERAL)	6,102	(1,462)	-	-	-
601-49400-433	Dues/Subsc/Fees	5,736	21,076	18,076	23,883	40,489
Total:		552,156	568,416	506,825	785,570	571,810
NET INCOME (LOSS)		104,202	228,024	331,468	269,354	418,966

Additional Cash Inflows (Outflows)

Debt Payments	(266,000)	(271,000)	(276,000)	(282,000)	(287,000)	Amounts are hard keyed per the
Purchase of Equipment, etc.	(1,083)	(379,403)	-	-	(4,340)	Statement of Cash Flows-
Receipts on/(Advances to) Other Funds	-	25,000	50,000	50,000	-	

WATER AND SEWER 2019-2023 AUDIT REPORT

Revenues	WATER					SEWER				
	2023	2022	2021	2020	2019	2023	2022	2021	2020	2019
Charges for Service	\$ 875,720	\$ 796,197	\$ 815,680	\$ 764,420	\$ 630,839	\$ 569,376	\$ 543,011	\$ 586,251	\$ 497,145	\$ 458,738
Expenses										
Wages and Benefits	57,144	70,587	57,602	88,373	68,682	54,437	72,239	56,456	69,453	65,808
Materials and Supplies	49,615	70,158	29,064	38,002	50,509	158,654	125,599	136,485	115,756	148,765
Other services & Charges	116,169	114,477	91,242	113,762	101,928	124,688	101,390	112,647	99,673	74,472
Depreciation/Amortization	233,999	227,805	228,889	222,922	228,092	197,953	188,246	189,100	190,529	192,278
Total Operating Expenses:	<u>456,927</u>	<u>483,027</u>	<u>406,797</u>	<u>463,059</u>	<u>449,211</u>	<u>535,732</u>	<u>487,474</u>	<u>494,688</u>	<u>475,411</u>	<u>481,323</u>
Net Operating Income:	\$ 418,793	\$ 313,170	\$ 408,883	\$ 301,361	\$ 181,628	\$ 33,644	\$ 55,537	\$ 91,563	\$ 21,734	\$ (22,585)
Non-Operating Revenue & (Expenses)										
Special Assessments	\$ 1,652	\$ -	\$ -	\$ -	\$ -	\$ 733	\$ -	\$ -	\$ -	\$ -
Intergovernmental Revenue	4	256	91	138	98	4	237	80	117	515
Loss on Disposal of Capital Assets	-	-	-	-	-	-	-	-	-	-
Investment Income	63,630	18,896	5,306	23,418	6,771	55,915	22,800	8,220	20,771	9,993
Interest Income on Note Receivable	-	-	-	-	-	-	-	-	6,385	9,416
Interest Expense	(14,883)	(20,450)	(25,909)	(31,261)	(36,516)	-	(267)	(3,470)	(6,567)	(9,560)
Other Revenue	1,010	3,327	5,257	1,941	-	25,331	1,089	1,473	22,909	22,386
Reimbursement & Hook up fees	48,760	5,923	11,959	6,523	18,650	53,810	5,923	48,349	9,159	15,248
Total non-operating Revenue (Expenses)	<u>100,173</u>	<u>7,952</u>	<u>(3,296)</u>	<u>759</u>	<u>(10,997)</u>	<u>139,793</u>	<u>29,782</u>	<u>54,652</u>	<u>52,774</u>	<u>47,998</u>
Income before operating transfer	518,966	321,122	405,587	302,120	170,631	169,437	85,319	146,215	74,508	25,413
**Net Operating Transfers	(100,000)	(282,093)	(74,119)	(74,096)	(66,429)	(100,000)	(282,094)	(75,000)	(75,000)	(72,427)
Capital Contribution From Other Fund	-	230,325	-	-	-	-	370,656	-	-	-
Net Income (LOSS):	<u>\$ 418,966</u>	<u>\$ 269,354</u>	<u>\$ 331,468</u>	<u>\$ 228,024</u>	<u>\$ 104,202</u>	<u>\$ 69,437</u>	<u>\$ 173,881</u>	<u>\$ 71,215</u>	<u>\$ (492)</u>	<u>\$ (47,014)</u>
Payment on principal debt	\$ (287,000)	\$ (282,000)	\$ (276,000)	\$ (271,000)	\$ (266,000)	\$ -	\$ (92,000)	\$ (89,000)	\$ (86,000)	\$ (83,000)
Receipts from/(Advances to) Other Fund	(49,334)	50,000	50,000	25,000	-	(49,335)	50,000	50,000	25,000	-
Purchase of Capital Assets	(4,340)	-	-	(379,403)	(1,083)	(103,910)	(178,384)	(24,333)	-	-
Capital Assets Transferred From Other Funds	-	(230,325)	-	-	-	-	(370,656)	-	-	-
Depreciation	233,999	227,805	228,889	222,922	228,092	197,953	188,246	189,100	190,529	192,278
Loss on Disposal of Capital Assets	-	-	-	-	-	-	-	-	-	-
Changes in accrual balances	(2,176)	-	-	(24,359)	400	(9,468)	-	-	74,424	74,299
Net Increase (decrease) in cash	<u>\$ 310,115</u>	<u>\$ 34,834</u>	<u>\$ 334,357</u>	<u>\$ (198,816)</u>	<u>\$ 65,611</u>	<u>\$ 104,677</u>	<u>\$ (228,913)</u>	<u>\$ 196,982</u>	<u>\$ 203,461</u>	<u>\$ 136,563</u>

**These dollars are a transfer to or from other funds to cover cash shortfalls in such funds.

CITY OF ALBANY
WATER AND SEWER CASH BALANCES

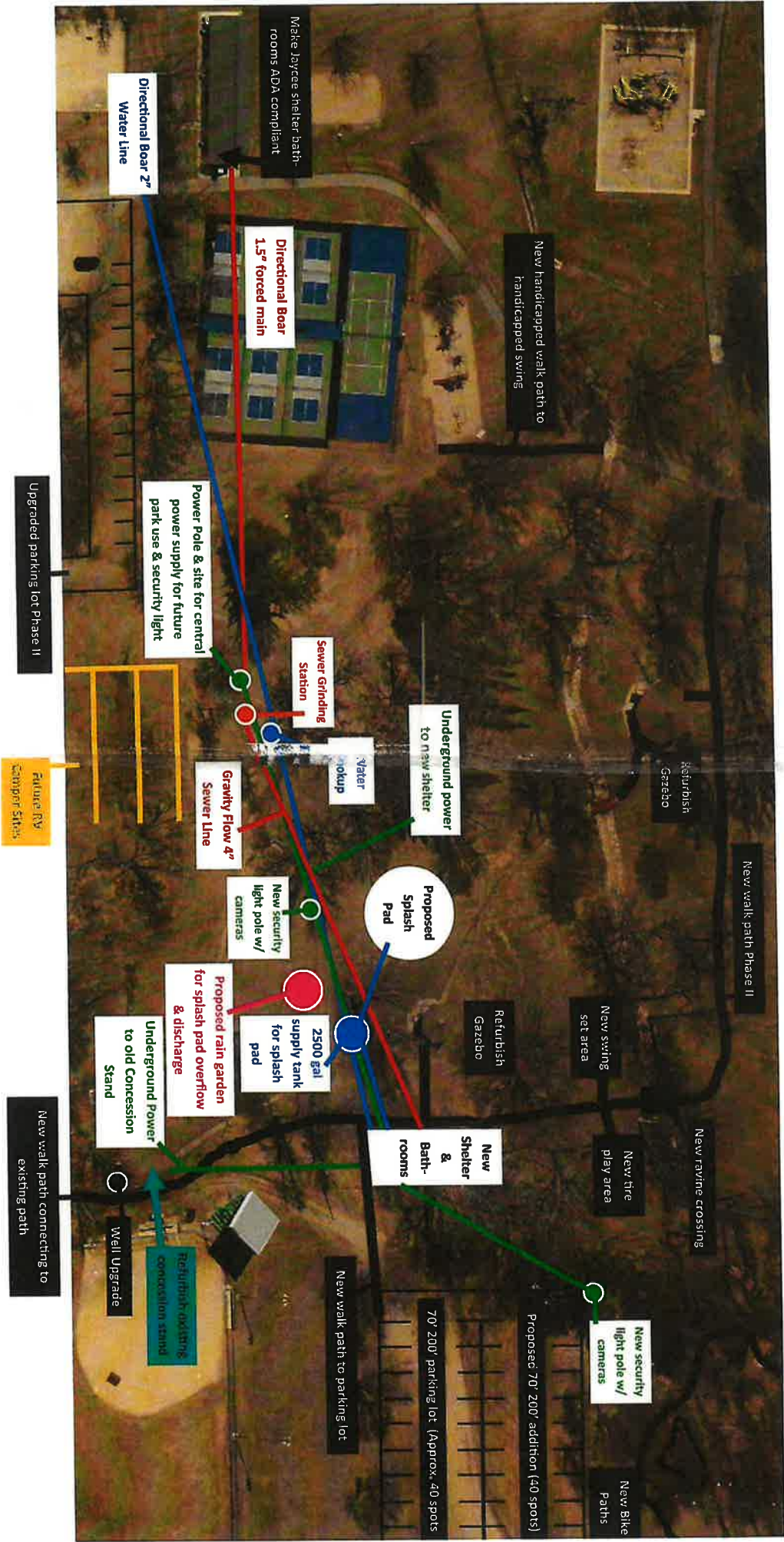
Water Fund:	Pooled Checking #10100	Savings #10405	Investments #10400	Total	Change
2023	\$ (959,774)	\$ 1,786,688	\$ 250,000	\$ 1,076,914	\$ (1,646,941)
2022	978,528	745,327	1,000,000	2,723,855	1,993,183
2021	(774,100)	1,504,772	-	730,672	315,874
2020	(983,500)	1,398,298	-	414,798	(198,816)
2019	(667,177)	1,280,791	-	613,614	65,611
2018	(703,737)	1,251,740	-	548,003	(48,617)
2017	(696,593)	1,293,213	-	596,620	216,520
2016	(670,706)	1,050,806	-	380,100	40,130
2015	(704,112)	1,044,082	-	339,970	246,348
2014	(766,246)	859,868	-	93,622	(889,868)
2013	(427,430)	1,410,920	-	983,490	

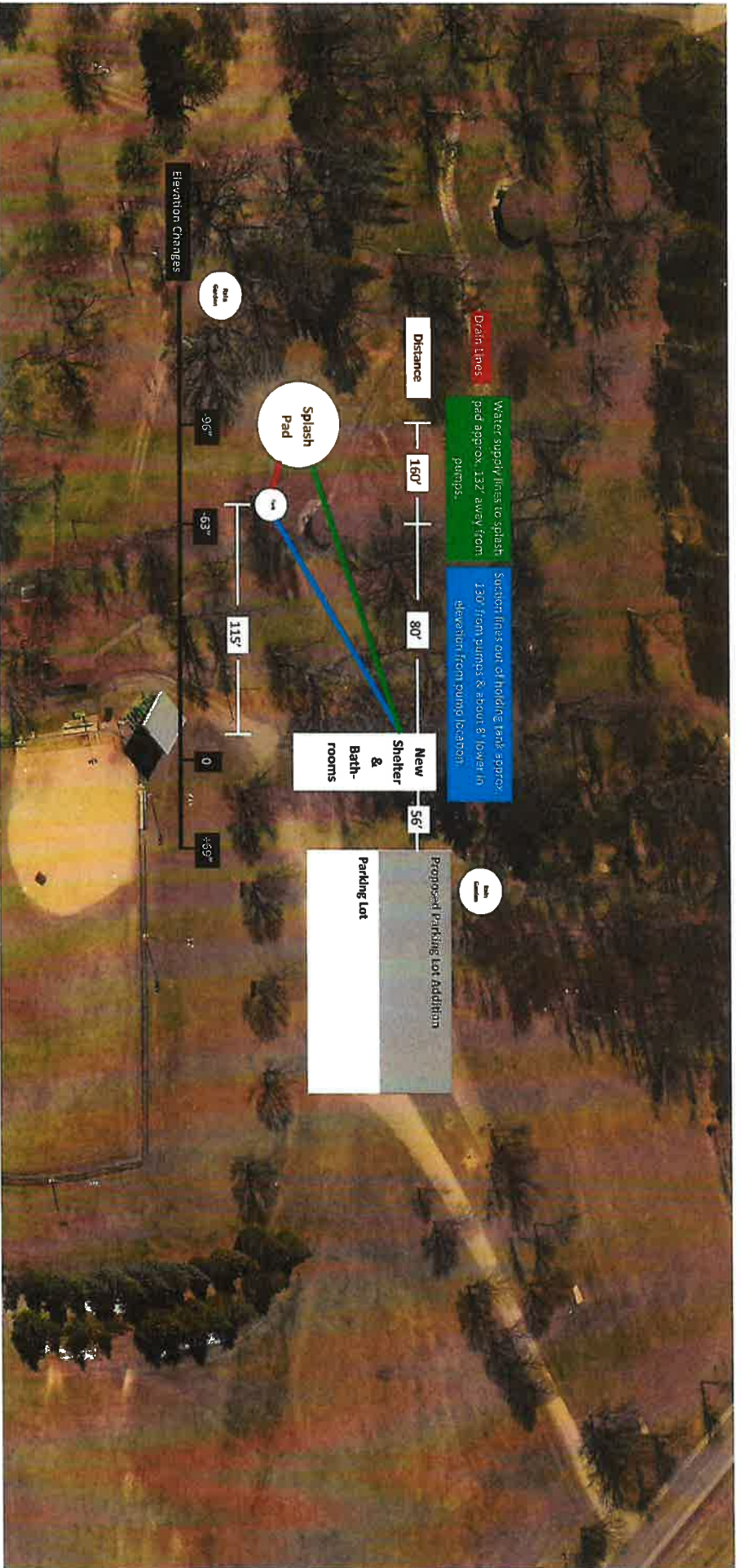
Sewer Fund:	Pooled Checking #10100	Savings #10405	Investments #10400	Total	Change
2023	\$ 106,947	\$ 1,516,324	\$ 325,000	\$ 1,948,271	\$ 104,677
2022	57,802	785,792	1,000,000	1,843,594	(222,278)
2021	527,778	1,538,094	-	2,065,872	276,155
2020	356,930	1,432,787	-	1,789,717	203,461
2019	293,753	1,088,393	204,110	1,586,256	136,562
2018	260,086	1,189,608	-	1,449,694	43,742
2017	109,371	1,296,581	-	1,405,952	221,376
2016	48,636	1,135,940	-	1,184,576	141,847
2015	(215,419)	1,258,148	-	1,042,729	(163,748)
2014	(217,915)	1,424,392	-	1,206,477	(225,049)
2013	(277,996)	1,709,522	-	1,431,526	

City of Albany
 Available Cash
 Years Ended 2023-2019

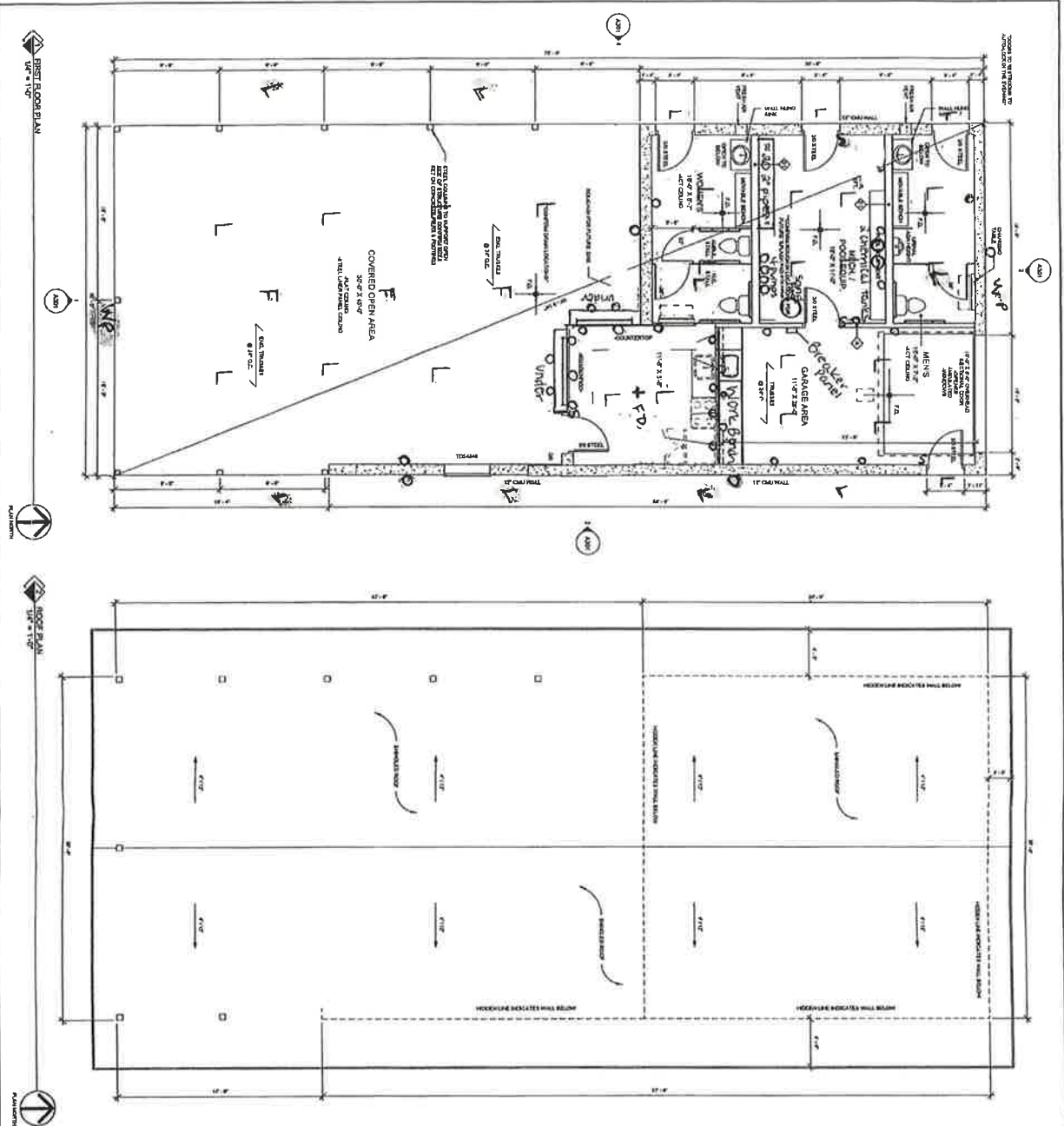
	<u>2023</u>	<u>2022</u>	<u>2021</u>	<u>2020</u>	<u>2019</u>
General	\$ 3,038,816	\$ 1,518,033	\$ 1,353,094	\$ 1,363,791	\$ 1,303,686
EDA	-	19,503	-	4,411	67,295
Debt Service	3,690,045	3,484,559	3,555,887	2,731,508	2,567,842
Capital Projects	833,946	242,554	7,430	399,239	244,910
Water	1,076,914	766,799	730,672	414,798	613,614
Sewer	1,948,271	1,843,594	2,065,872	1,789,717	1,586,256
Golf Course	<u>165,786</u>	<u>87,467</u>	<u>195,815</u>	<u>94,506</u>	<u>76,114</u>
	10,753,778	7,962,509	7,908,770	6,797,970	6,459,717
Less: Res. for EDA	-	(19,503)	-	(4,411)	(67,295)
Less: Res. for Debt	(3,690,045)	(3,484,559)	(3,555,887)	(2,731,508)	(2,567,842)
Less: Res. for Cap. Proj.	<u>(833,946)</u>	<u>(242,554)</u>	<u>(7,430)</u>	<u>(399,239)</u>	<u>(244,910)</u>
Available Cash	<u>\$ 6,229,787</u>	<u>\$ 4,215,893</u>	<u>\$ 4,345,453</u>	<u>\$ 3,662,812</u>	<u>\$ 3,579,670</u>
Change	<u>\$ 2,013,894</u>	<u>\$ (129,560)</u>	<u>\$ 682,641</u>	<u>\$ 83,142</u>	

Rev. 8/24/24





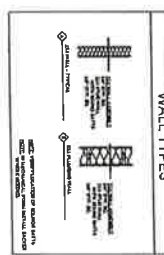
Rev. 8/29/24



PROJECT INFORMATION - FLOOR PLANS

ST ROSA LUDBER INC. 1000 W. 10TH ST. ST. LOUIS, MO 63103
 PHONE: (314) 241-1111 FAX: (314) 241-1112
 WWW.STROSA.COM

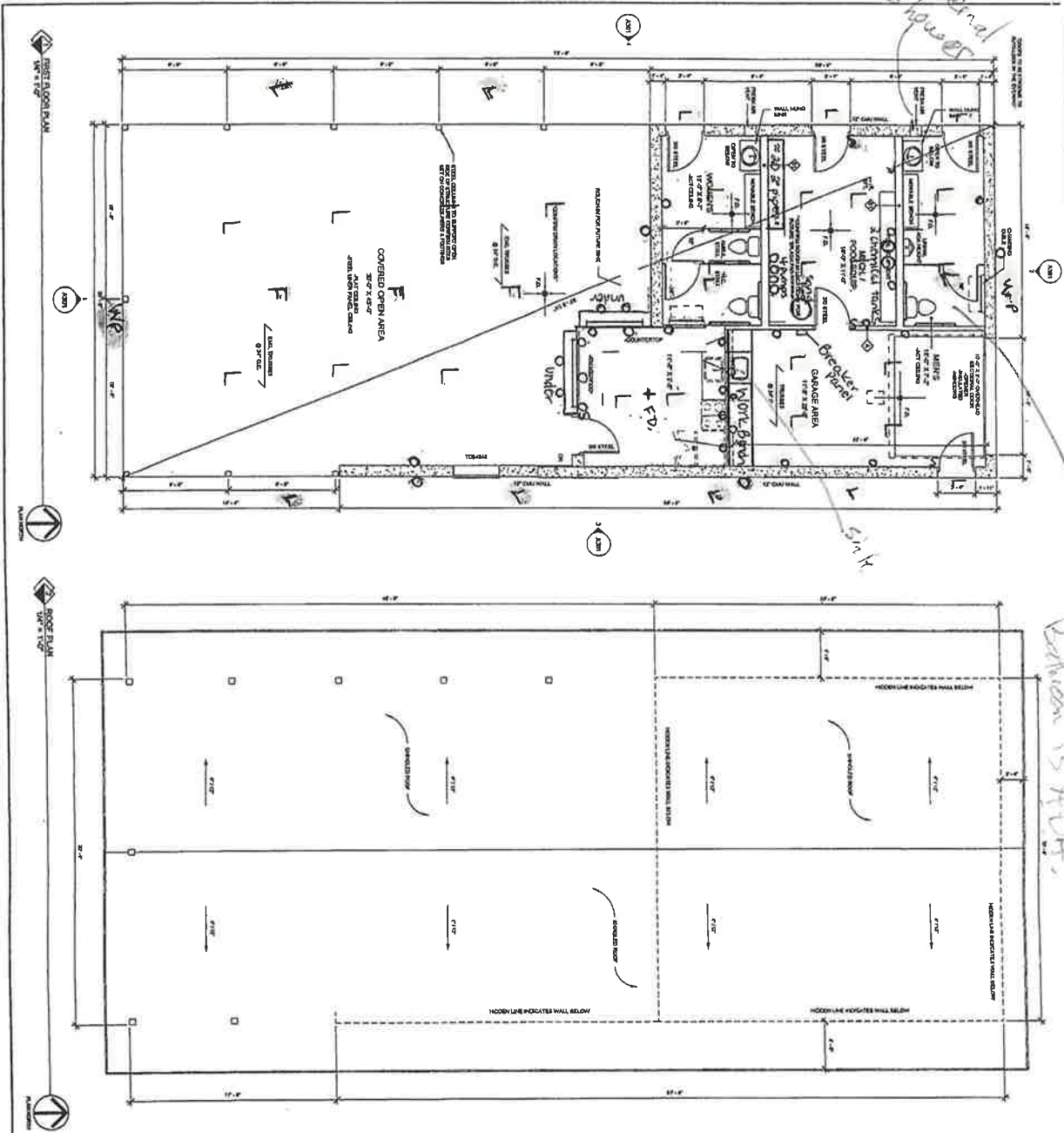
DATE: 08/29/24
 DRAWN BY: NICK TURNER
 CHECKED BY: NICK TURNER



0 - outlet
 L - Light
 F - Fan
 WP - wall Pckt Light

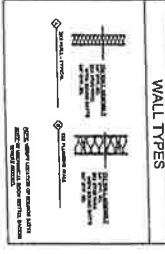
DISCLAIMER
 THESE PLANS ARE SUBJECT TO BE SEEN FOR CONSTRUCTION

PROJECT NAME:		CITY OF ALBANY - JAYCEES' NEW SHELTER	
REVISIONS / ISSUE			
No.	Description	Date	Drawn
SCL. FT.:		2250 SF - NEW STRUCTURE	
DATE:	08/29/24	DESIGNER:	NICK TURNER
CHECKER:	NICK TURNER	SHEET NAME:	FIRST FLOOR PLAN & ROOF PLAN
SHEET NUMBER:		A201	



PROJECT INFORMATION - FLOOR PLAN

ALL DIMENSIONS AND FINISHES TO BE DETERMINED BY THE ARCHITECT. THE CONTRACTOR SHALL VERIFY ALL DIMENSIONS AND FINISHES BEFORE CONSTRUCTION. THE CONTRACTOR SHALL BE RESPONSIBLE FOR OBTAINING ALL NECESSARY PERMITS AND APPROVALS FROM THE LOCAL AND STATE AUTHORITIES. THE CONTRACTOR SHALL BE RESPONSIBLE FOR OBTAINING ALL NECESSARY PERMITS AND APPROVALS FROM THE LOCAL AND STATE AUTHORITIES. THE CONTRACTOR SHALL BE RESPONSIBLE FOR OBTAINING ALL NECESSARY PERMITS AND APPROVALS FROM THE LOCAL AND STATE AUTHORITIES.

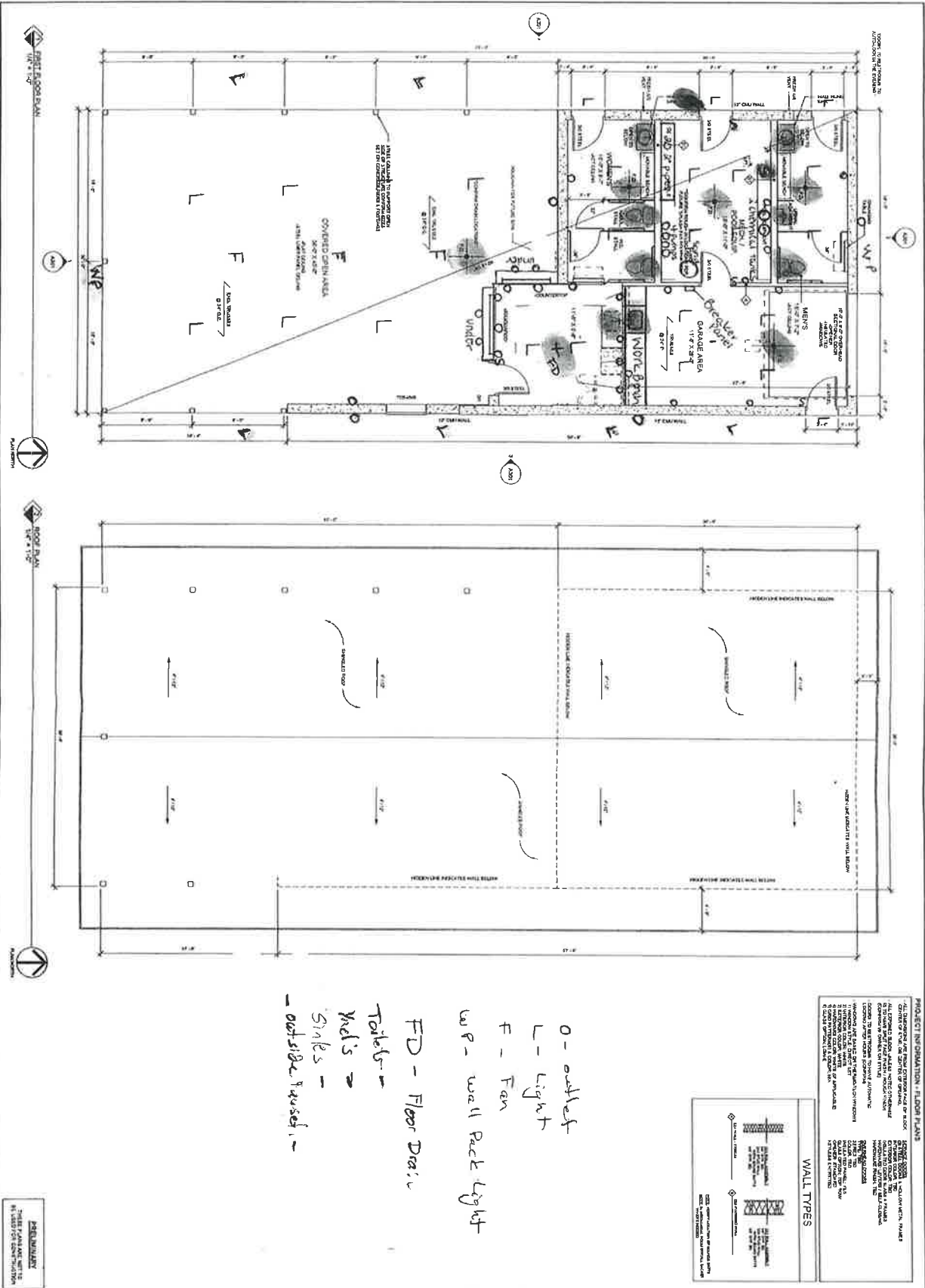


0 - outlet
 L - Light
 F - Fan
 W-P - wall Rack Light

PRELIMINARY
 THESE PLANS ARE NOT TO BE USED FOR CONSTRUCTION

PROJECT NAME		CITY OF ALBANY - JAYCEES' NEW SHELTER
REVISIONS / ISSUE		
No.	Description	Date
SQA FT:		2248 SF - NEW STRUCTURE
DATE:		08/24/2024
DRAWN BY:		NICK TURNER
SHEET NAME:		FIRST FLOOR PLAN & ROOF PLAN
SHEET NUMBER:		A201

ST. ROSA LUMBER INC.
 1000 W. 10th St. Albany, NY 12202
 (518) 865-1234
 www.strosa.com



0 - outlet
 L - light
 F - Fan
 WP - wall Rack light
 FD - Floor Drain
 Toilet
 Mel's
 Sinks -
 - outside Pansel -

PROJECT INFORMATION - FLOOR PLANS

ALL DIMENSIONS UNLESS OTHERWISE SPECIFIED ARE IN FEET AND INCHES. DIMENSIONS SHOWN IN PARENTHESES INDICATE FINISH DIMENSIONS. ALL FINISHES TO BE DETERMINED BY THE ARCHITECT IN CONSULTATION WITH THE OWNER. THE ARCHITECT SHALL BE RESPONSIBLE FOR OBTAINING ALL NECESSARY PERMITS AND APPROVALS FROM THE APPROPRIATE AGENCIES. THE ARCHITECT SHALL BE RESPONSIBLE FOR OBTAINING ALL NECESSARY UTILITIES INFORMATION AND SHALL BE RESPONSIBLE FOR LOCATING ALL UTILITIES PRIOR TO CONSTRUCTION. THE ARCHITECT SHALL BE RESPONSIBLE FOR OBTAINING ALL NECESSARY SURVEY INFORMATION AND SHALL BE RESPONSIBLE FOR LOCATING ALL SURVEY POINTS PRIOR TO CONSTRUCTION. THE ARCHITECT SHALL BE RESPONSIBLE FOR OBTAINING ALL NECESSARY AS-BUILT INFORMATION AND SHALL BE RESPONSIBLE FOR LOCATING ALL AS-BUILT POINTS PRIOR TO CONSTRUCTION.

WALL TYPES

1' CMU WALL WITH INTERIOR FINISH
 2' CMU WALL WITH INTERIOR FINISH
 3' CMU WALL WITH INTERIOR FINISH
 4' CMU WALL WITH INTERIOR FINISH
 6" GYP BOARD PARTITION WALL
 8" GYP BOARD PARTITION WALL
 12" GYP BOARD PARTITION WALL

ST ROSA LUMBER INC.
 11511 COLTON ROAD • MISSOURI, MO 64502
 816-431-3131

DISCLAIMER
 THIS PLAN, SPECIFICATIONS AND SCHEDULES ARE THE PROPERTY OF ST. ROSA LUMBER INC. AND ARE TO BE USED ONLY FOR THE PROJECT AND SITE IDENTIFIED HEREIN. NO PART OF THIS PLAN, SPECIFICATIONS OR SCHEDULES IS TO BE REPRODUCED OR TRANSMITTED IN ANY FORM OR BY ANY MEANS, ELECTRONIC OR MECHANICAL, INCLUDING PHOTOCOPYING, RECORDING, OR BY ANY INFORMATION STORAGE AND RETRIEVAL SYSTEM, WITHOUT THE WRITTEN PERMISSION OF ST. ROSA LUMBER INC.

PROJECT NAME:
 CITY OF ALBANY - JAYCEES' NEW SHELTER

REVISIONS / ISSUE

NO.	DESCRIPTION	DATE

SHEET NAME: FIRST FLOOR PLAN & ROOF PLAN
 SHEET NO.: A201
 DATE: 08/08/2024
 DRAWN BY: NICK TURNER
 SCALE: 1/8" = 1'-0" (NEW STRUCTURE)
 PROJECT NO.: 2286 SF - NEW STRUCTURE

PRELIMINARY
 THESE PLANS ARE NOT TO BE USED FOR CONSTRUCTION

SAMPLE
SIMPLE BUILDING SPEC FOR PARK SHELTER

Project Details for Building/Shelter

Site Work—

- Tree removal
- Remove stumps and old soil
- Fill and compact to building height
- Install grinding station
- Run water and sewer lines to new shelter

Sub Structure—

- Install footings for building and block up to building height
- Underground sewer and water lines into structure from Jaycees structure
- Underground water and gray water requirements for bathrooms and splash pad equipment room
- Run two extra conduits out of mechanical room for potential future use
- Bury electrical power from pole to new structure and from new structure to existing shed by the softball field

Building—

- Concrete block footings and ~~walls~~ **Flggs**
- ~~Bleeks exposed on the exterior will be rough faced~~
- Doors are to be steel with steel frames
- Heavy commercial doors insulated
- Steel insulated overhead door with windows and opener
- Support pillars are to be steel
- Wood engineered rafters
- Asphalt shingles

Electrical—

- Underground from power pole to new shelter
- From new shelter to softball field shelter
- Two light poles in the park
- Power unit at pole for future add-ons
- 200 amp service for new shelter
- Lighting and outlets as laid out on print
- Power for new grinding station

Plumbing—

- Women's bathroom: two stools, one sink, one floor drain
- Men's bathroom: one stool, one urinal, one sink
- Mechanical room: rough in for future splash pad equipment
- Floor drains in mechanical room, shop area, and catering area

Shelter Budget/Estimates

Items	Estimated Cost
Project Managers - Arnsen Construction/Friends of North Park	\$ -
Design - Bid Spec	\$ 18,000.00
Excavation - Tree Removal/Site Prep	\$ 42,000.00
Sewer & Water & Grinding Station	\$ 35,000.00
Foundation & Concrete Work	\$ 21,000.00
Plumbing & Bathrooms	\$ 20,000.00
Electrical - Building & Power to Existing Areas "underground"	\$ 80,000.00
Construction Materials	\$ 38,000.00
Construction Labor	\$ 18,000.00
Sidewalks & Paths (ADA)	\$ 6,000.00
Landscaping	\$ 8,000.00
Security Lights & Cameras	\$ 10,000.00
Miscellaneous	\$ -
	<u>\$ 296,000.00</u>

Funds Received

Central MN Community Fund	\$ 250,000.00
Albany Lions	\$ 15,000.00
Albany Fiber Communications	\$ 30,000.00
Friends of North Park	\$ 1,000.00
	<u>\$ 296,000.00</u>

*NOTE: these is no money allocated for kitchen equipment and roll up doors. If that is required, we will need additional funding.**

Roll Up Doors (2)	\$ 2,000.00
Inside Countertops	\$ 1,000.00
Outlets/Power	\$ 500.00
Walls & Door	\$ 1,500.00
Equipment: Refrigerator, Oven, Sink, Microwave	\$ 5,000.00
	<u>\$ 10,000.00</u>

Splash Pad Budget/Estimates

Items	Estimated Cost
Splash pad equipment for recirculating system	\$ 180,000.00
Site prep work	\$ 8,000.00
Installation - Friends of North Park (normal \$180,000)	\$ 40,000.00
Concrete work	\$ 35,000.00
Electrical	\$ 12,000.00
External Shower	\$ 3,000.00
Plumbing	\$ 6,000.00
Landscaping - trails and sidewalks	\$ 16,000.00
Miscellaneous - benches	\$ 14,000.00
Seeding	\$ 4,000.00
	<u>\$ 318,000.00</u>
Funds Received	
Central MN Community Fund	\$ 250,000.00
Teals Market	\$ 10,000.00
Albany Lions	\$ 15,000.00
Albany Jaycees Previous Year's Allocations	\$ 40,000.00
Albany Jaycees Additional Funding	\$ 3,000.00
	<u>\$ 318,000.00</u>

To: City of Albany
Electrical Scope at North Park
Location: Albany MN

Shelter Building

Garage Area

- 1-door opener wiring
- 6-receptacles – 2 circuits
- 4-LED 8ft, 4 lamp strip lights – switched at one location
- 1-Exit/Emergency light over the service door

Bathroom x2

- 2-LED 4ft, 2 lamp strip lights – switched at one location
- Exhaust fan wiring – Fan supplied Electrical Contractor – venting by Electrical Contractor – switched at one location
- 1-receptacle

Mechanical Room

- 2-8ft, 4 lamp strip lights – switched at two locations
- 1-electric water heater wiring
- 1-water softener receptacle
- 7-receptacles

Covered Porch Area

- 6-quad receptacles – 3 circuits
- 7-LED canopy lights – switched at one location
- 3 black ceiling fans – controlled with speed controls

Kitchen

- 9-receptacles
- 1-refrigerator receptacle
- 2-LED 4ft, 4 lamp strip lights – switched at one location

Exterior

- 2-WF receptacles
- 1-Wall pack at the East and West end of the building – controlled with photocell
- 10-LED disc lights in the soffit – controlled with photocell and override off switch

Site Electrical

Electrical Service

- 1-single phase 200amp panel installed in the mechanical room
- 1-single phase 250amp aluminum direct bury feeder from the new yard service to the new 200amp panel in the shelter- trenching by Electrical Contractor
- 1-single phase 100amp #1 aluminum direct bury feeder from the new shelter to refeed the softball shack. Trenching by Electrical Contractor

Pole Lights

- Install underground wiring for a new light pole at the splash pad. – 2-LED heads, bull horn, and wiring supplied and installed by Electrical Contractor. The pole, anchors, trenching, and concrete footing supplied by others.
- Future Camera conduit installed by Electrical Contractor. Conduit to be provided by others.

- Install underground wiring for a new light pole at the softball field near the shack. – 2 LED heads, bull horn, trenching and wiring supplied and installed by Electrical Contractor. The pole, anchors and concrete footing supplied by others.
- Future Camera conduit installed by Electrical Contractor. Conduit to be provided by others.

Install underground wiring for a new light pole near the future RV sites. 2-LED heads, bull horn, and wiring supplied and installed by Electrical Contractor. The pole, anchors, trenching and concrete footing supplied by others.
Future Camera conduit installed by Electrical Contractor. Conduit to be provided by others.

400amp Electrical Service Near the Xcel Pole

1 -320 meter socket - single phase
1 -200amp 3R single phase panel

1-receptacle

Wood structure to support the service supplied by others

This service will feed the new shelter and the shelter would feed the softball shack.
The existing overhead wires to be removed.

Electrical Inspections

Recv 8/26/24

FRIENDS OF NORTH PARK & ALBANY AREA JAYCEES PARK PROJECTS

PHASE II - AMENITIES IMPROVEMENTS (2024)	8/19/24 UPDATE
1. PICKELBALL COURTS REPAIR CRACKS IN EXISTING CONCRETE	DONE
2. IMPROVE JAYCEE SHELTER REMODEL EXISTING BATHROOMS	SEPTEMBER 15th
3. IMPROVE EXISTING WALK PATHS - NORTH END REMOVAL OF OLD PATH, GRAVEL & NEW BASE NEW ASPHALT	SPRING 2025 90% COMPLETE
4. REPAIR PARKING LOT BY JAYCEE SHELTER & PICKLEBALL COURTS CRUSHED GRANITE BASE. NO ASPHALT. CONCRETE CURBING - PAID BY CITY	OCTOBER 20th Depending on sewer & water
5. TREE TRIMMING TRIM TREES & REMOVE BRUSH SIMILAR TO NORTH LAKE	DONE
6. SOFTBALL & SOCCER FIELD WELL REPAIR WELL FOR SOFTBALL PARK AND FUTURE SOCCER FIELD 40 GPM PUMP	ON HOLD
7. PARK GAZEBOS DEMO SMALL GAZEBO & REPAIR EXISTING LARGE GAZEBO	DONE
8. SOFTBALL PARKING LOT RESLOPE EXISTING PARKING LOT & MAKE MORE PARKING FOR DOG PARK & NORTH END ACTIVITIES	SPRING 2025 Depending on new shelter
9. SOFTBALL SHELTER REWIRE OLD CONCESSION STAND BUILD NEW SHELTER W/BATHROOMS: MATERIALS, CONCRETE, ELECTRICAL, PLUMBING, EXCAVATING, SEPTIC	DECEMBER (Hopefully)
10. PLAY AREA BUILD NEW KIDS PLAY AREA WITH OFF ROAD EQUIPMENT TIRES AND PEE ROCK	DONE
11. BIKE PATH PUMP TRACK MOUNTAIN BIKE PATH	DONE

12. SPLASH PAD

DIRT PREP WORK DIG OUT OLD FILL
NEW FILL
WATER LINE EXT & HOOKUP
SPLASH PAD KIT & INSTALL
LANDSCAPING AROUND PAD

JUNE 1st 2025
(Hopefully)

13. SOCCER FIELDS

LEVEL SITE
BLACK DIRT
SEEDING
IRRIGATION

FUTURE PLAN

14. PLAYGROUND EQUIPMENT

PRESCHOOL
FIRETRUCK

??

15. SLEDDING HILL

EXCAVATION
SEEDING

FUTURE PLAN

Recv. 8/26/24

FRIENDS OF NORTH PARK

8/26/24 Update to Park Board

1. Pickleball Courts

- Repair existing pickleball courts. Is the current repair acceptable?
- Received extra paint in case any future repairs are needed

2. Jaycee Shelter Improvements

- Jaycees looking to add windows to current shelter.
- Add concrete around the outside of the building to accommodate more tables
- Sidewalk access to remodeled ADA compliant bathrooms

3. Improve Walk Paths

- Additional walk paths to connect new amenities
adding Black dirt

4. Softball Parking Lot

- May need to be larger with new location of splash pad
- Install rain garden pond and pipe to overflow canal

5. Softball Shelter

- Location of shelter
- Tree removal for shelter
- Shelter design
- Ability to let Friends of North Park along with Arnzen Construction to run project
- Keep small gazebo or remove?
- Power requirements for new structure and potential panel in middle of park to accommodate RV parking for future
- Sewer & water access to new shelter and possible RV area
- Elevation challenges to splash pad location

6. Bike Path

- Concern over new mountain bike path to widen creek crossing?

7. Splash Pad

- Design and approval to move forward with infrastructure for pad and utility room in new shelter

8. Soccer Fields

- Future site for soccer field and potential funding

9. Sledding Hill

- Future site for sledding hill

10. Approval to move forward with creating designs for walk path along highway 238 to create safe walk path connecting schools

11. Pedestrian Walk Path

- Linden & 5th Street walk path along the park and lake
- 3 memorial bench sites

12. Congratulations on the success of getting \$500,000 in grants for the park.

- City concerns
- New policy on allocating and soliciting funds